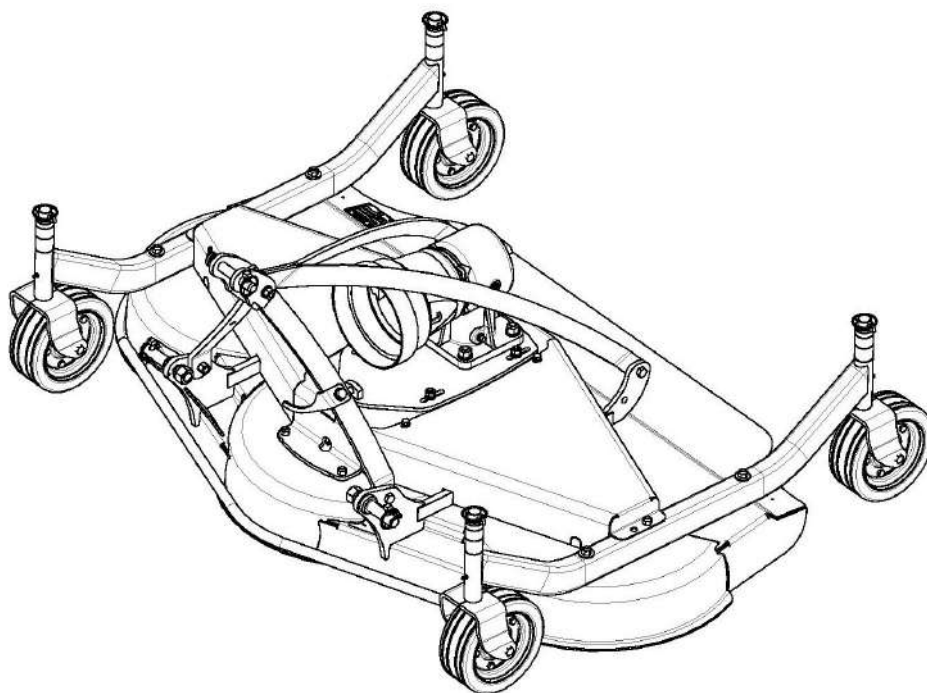




USER AND SERVICE INSTRUCTION MANUAL

SPARE PART LIST



10/2019

FINISHING MOWER

TAM120/150/180 EA – EL

TAM120/150/180 EAVF – ELVF

TAMPRO120/150/180 EA –EL

TAMPRO 140/170/230 M

TAM PRO 230 EA

Please read the following instructions carefully before operating the machine and refer to them as needed. If you do not understand a part of the user manual, please contact your MAJAR reseller or:

MAJAR S.A
1 Route de Montréal - CS30074
11890 CARCASSONNE Cedex 9
Phone 0033 / 4 68 25 38 16

TABLE OF CONTENTS

FOREWORD.....	2	ADJUSTMENT AND USE.....	12
TECHNICAL DATA.....	3	MAINTENANCE BY USER.....	14
INSPECTION CHECKLIST.....	3	TIGHTENING TORQUE.....	17
SAFETY REGULATIONS.....	4	MALFUNCTION AND REMEDY.....	17
SAFETY STICKERS.....	5	DECLARATION OF CONFORMITY....	18
MONTAGE OF THE MOWER.....	7	GUARANTEE.....	19
INSTALLATION AND COMMISSIONING	10	SPARE PART LIST... ..	21

FORWARD

Please read this user manual and the manual delivered with the rotary slasher cardan before operating your rotary slasher, the information allow you ensure quality work in complete safety. If the manual is not clear enough, please contact our technical service.

The security depends on the use of the machine with the limitations explained in this manual.

You have to know and to follow the safety regulations of this manual and of the tractor manual.

The machine you bought was carefully designed and manufactured in order to give you complete satisfaction.

As any mechanical gear, it requires cleaning and maintenance. Lubricate as described. Follow the regulations and safety information given in this manual and on the security stickers of the rotary slasher and the tractor.

For maintenance your MAJAR reseller has the competency and the original pieces to respond your needs.

Enter below model and serial number of your machine for reference.

MODEL :

SERIAL N°:

In line with the goals of continuous improvement MAJAR reserves the right to change the machines without changing the sold machines. The illustrations et characteristics of this manual may vary slightly on your due to production changes.

No part of this manual may be reproduced, copied or made public by whatever means without authorization of MAJAR.

Throughout the manual the terms “left” “right”, “front” “rear/back” are given referring to the driver’s position. The term IMPORTANT is used to indicate that a failure may cause damages for the machine. The terms WARNING and DANGER are used with safety alert symbols to indicate the degree of safety hazard.



This symbol means: attention, be careful, your safety is involved. It reminds the safety instructions or focuses your attention to dangerous practices which may cause injury or operational occurrence.



WARNING reminds the safety regulations: may cause injury if not observed



DANGER reminds the safety regulations: may cause irreparable, lasting injury or cause death if the good precautions are not taken

TECHNICAL DATA

Montage on 3 point standard rear linkage n°1 – Power grip *ASAE 1 3/8" - 6 flutes*

	Lateral ejection (EL)	Rear ejection (EA)	Recommended power (HP)	Working width (cm)	PTO (tr/min)	Weight (Kg)	Blade speed (tr/mnte)	Wheel (cm)	Number of blades	Cutting height (cm)
Rear Linkage	TAM120EL	TAM120EA	déc-20	120	540 *	152	2800	21 x 8	3	2,5 à 10
	TAM150EL	TAM150EA	15/30	150	540 *	175	2500	21 x 8	3	2,5 à 10
	TAM180EL	TAM180EA	20/40	180	540 *	195	2300	21 x 8	3	2,5 à 10
	TAMPRO120EL	TAMPRO120EA	12-20	120	540 *	182	2800	29 x 10	3	2,5 à 10
	TAMPRO150EL	TAMPRO150EA	15/30	150	540 *	205	2500	29 x 10	3	2,5 à 10
	TAMPRO180EL	TAMPRO180EA	20/40	180	540 *	225	2300	29 x 10	3	2,5 à 10
		TAMPRO230EA	40/70	230	540 *	340	2500	29 x 10	5	2,5 à 10
	MULCHING									
	TAMPRO140M		15/30	140	540 *	225	2500	29 x 10	3	2,5 à 10
	TAMPRO170M		20/40	170	540 *	255	2300	29 x 10	3	2,5 à 10
	TAMPRO230M		40/70	230	540 *	340	2500	29 x 10	5	2,5 à 10
Front Linkage (VF)	TAM120ELVF	TAM120EAVF	12-20	120	1000 *	152	2800	21 x 8	3	2,5 à 10
	TAM150ELVF	TAM150EAVF	15/30	150	1000 *	175	2500	21 x 8	3	2,5 à 10
	TAM180ELVF	TAM180EAVF	20/40	180	1000 *	195	2300	21 x 8	3	2,5 à 10

Airborne-noise and vibrations: the sound pressure level on the driver position is inferior to 70dB(A). The vibrations transmitted to the driver of the tractor are insignificant.

*Rotation direction of tractor power grip:

Versions « EL » and « EA » « M » → clockwise when standing in front of tractor output shaft.

Versions « ELVF » et « EAVF » → counter clockwise lorsque l'on est face à l'arbre de sortie du tracteur.

INSPECTION CHECKING LIST

The assembly, installation and commissioning of the mower deck is the MAJAR reseller's responsibility. Please read carefully the use and care manual and the safety regulations. Make sure that the indicated points of the checklist had been verified before delivery and on delivery and amended if necessary before delivering the machine to the owner.

INSPECTIONS BEFORE DELIVERY

- Check that all the safety screens, grids and safety measures are in place and in good condition
- Check that all screws and bolts are tightened to the right torque value (see table)
- Make sure that the safety stickers are in place and in good condition
- Check the oil level in the angular gearbox (recommended oil 80w90, GL4 or 5).
- Check the other lubrication points, apply new grease if necessary
- Check that the machine is operating correctly
- Check transmission status.

VERIFICATIONS AT DELIVERY

- Check the power grip speed and the rotation of the tractor
- Show the client how to mount the machine and how to realize the tool adjustments
- Explain the importance of lubrication and show him the lubrication points
- Show him les safety devices, safety measures and options
- Present the use and instruction manual to the client as well as the specific cardan manual, ask to read it
- Explain to the client to use the adequate signage when driving on the road.

SAFETY REGULATIONS



WARNING

Some illustrations may show the machine without protective screen or shield. Never use the machine without these devices.

- * Learn how to stop the machine in emergency situation. Read this manual and the tractor manual

- * Disengage the power grip, stop the motor, apply the handbrake and remove the key before all settings, adjustments, maintenance or disassembly

- * Control prior to each use the tightening of screws and nuts, particularly of the blades and hubs.

- * Make sure that all the safety screens, grids and safety measures are in place and in good condition

- * Clean the worksite from branches, stones or debris which may be projected and cause injury or damage

- * Make sure that the safety stickers are in place and in good condition

- * Avoid absolutely touching in any way the moving parts

- * Clean the grass and debris accumulations

- * Make sure that the machine is in good working condition before using it

- * Never let anyone else to the driver's cab during adjustment interventions, maintenance or disassembly of the machine

- * Check periodically tightening torques of all fasteners

- * While maneuvering on slope always work up and down, never across the slope

- * Place the wheels according to the setting de la voie la plus large afin d'augmenter la stabilité du tracteur

- * Avoid unstable embankments, rocks and holes; this can be dangerous when moving

- * Activate all the safety equipment

- * Only operate the control panel when you are correctly seated in front

- * Check visually hydraulic leaks and missing or faulty parts. Repair when necessary before every manoeuvre

- * Never let anyone else use this machine if the person did not read and understand this manual

- * Never let children use this machine

- * Always wear protective equipment for head, ears, hands and feet using this machine.

- * Always wear close-fitting clothing to avoid to be snatched by the moving parts or to hang on

- * Always work on daylight or with good artificial light

- * It is absolutely forbidden to transport persons or animals on the machine.

- * Do not use the machine in areas where you cannot keep safety distance from the persons or animals to avoid projection injury

- * If the tractor has a ROPS Roll Over Protective Structure, fasten your seat belt

- * Make sure that nobody or anything is behind you while backing off

- * Do not start or stop the engine abruptly on slopes

- * Do not use the machine on too big slopes

- * Reduce speed on slopes to avoid a loss of control

- * Be careful while driving along embankments or ditches

- * Pay attention to the holes or other area accidents on undulating terrains

- * For the use on public roads the operator needs to ensure that the machine is complied with the Highway Code, particularly signage, and he should observe strictly the standards in his country.

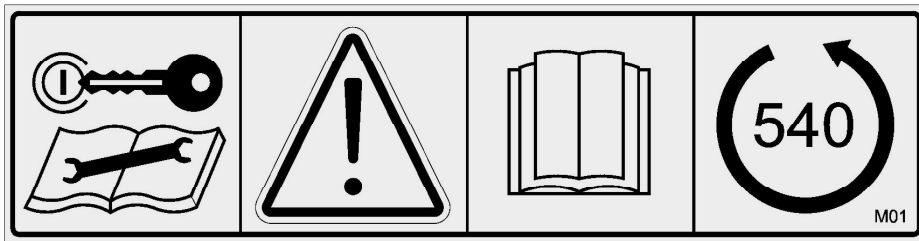
SAFETY STICKERS



WARNING

It is strictly forbidden to remove the safety stickers and symbols specifying danger. Missing or damaged stickers must be replaced immediately. Contact your MAJAR reseller. The information illustrated by these symbols must be necessarily respected. The noncompliance with these rules may cause death or serious injuries.

1



ATTENTION

Stop the tractor and remove the key before adjustment or maintenance operation

Read carefully the manual before operating the machine.

Check the power grip speed and direction of rotation before setting up the drive shaft.

2



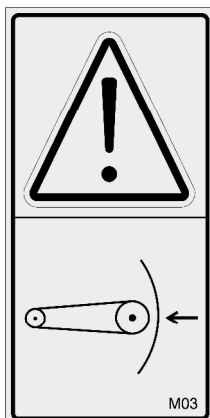
ATTENTION

Move away from the machine.

Danger of thrown objects.

Moving parts, risk of hand injuries, risk of foot injuries

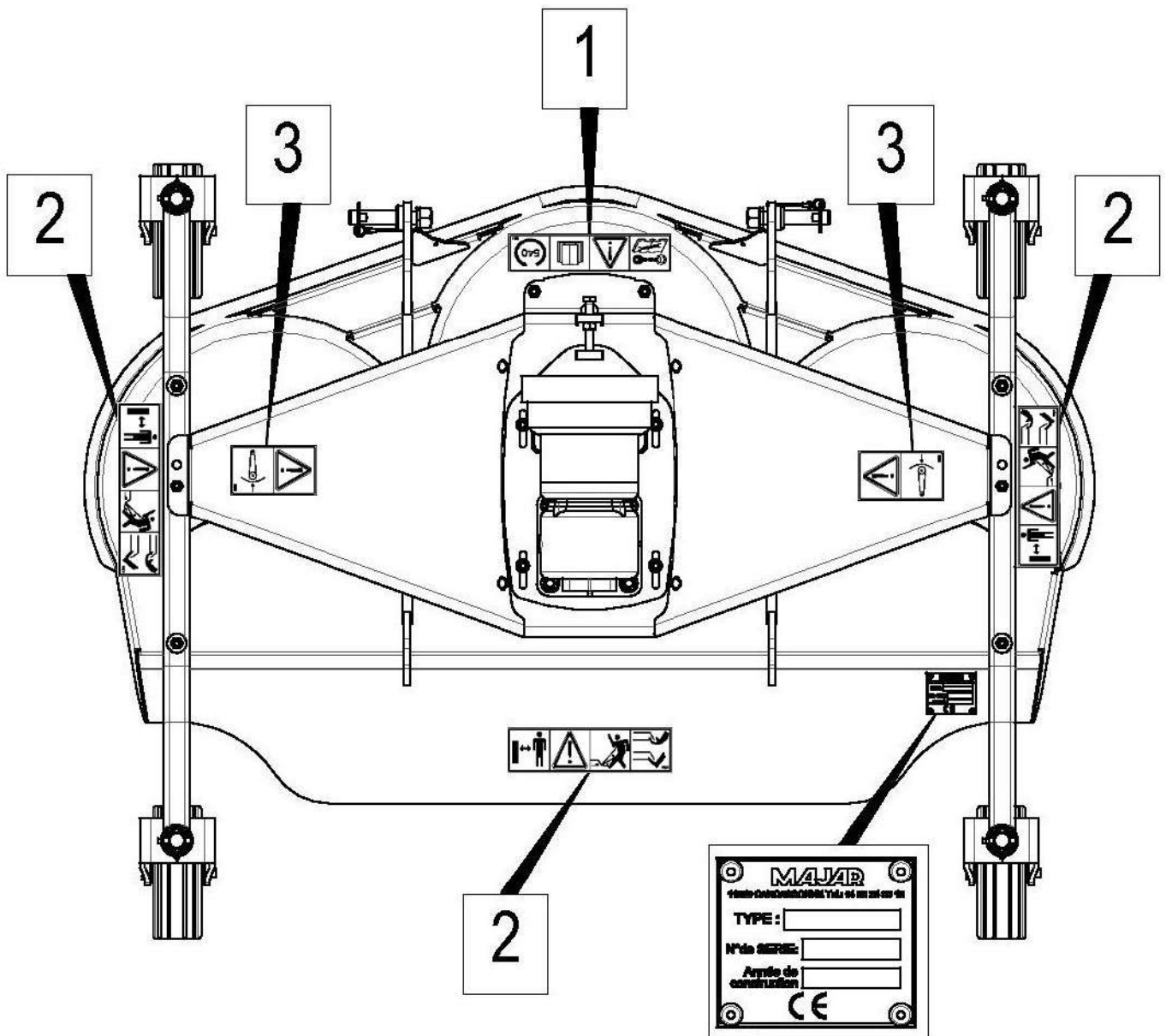
3



ATTENTION

Transmission, moving parts, do not remove the guard.

EMPLACEMENT OF THE SAFETY STICKERS AND THE IDENTIFICATION PLATE



MONTAGE OF THE MOWER

• MONTAGE OF THE MOWER:

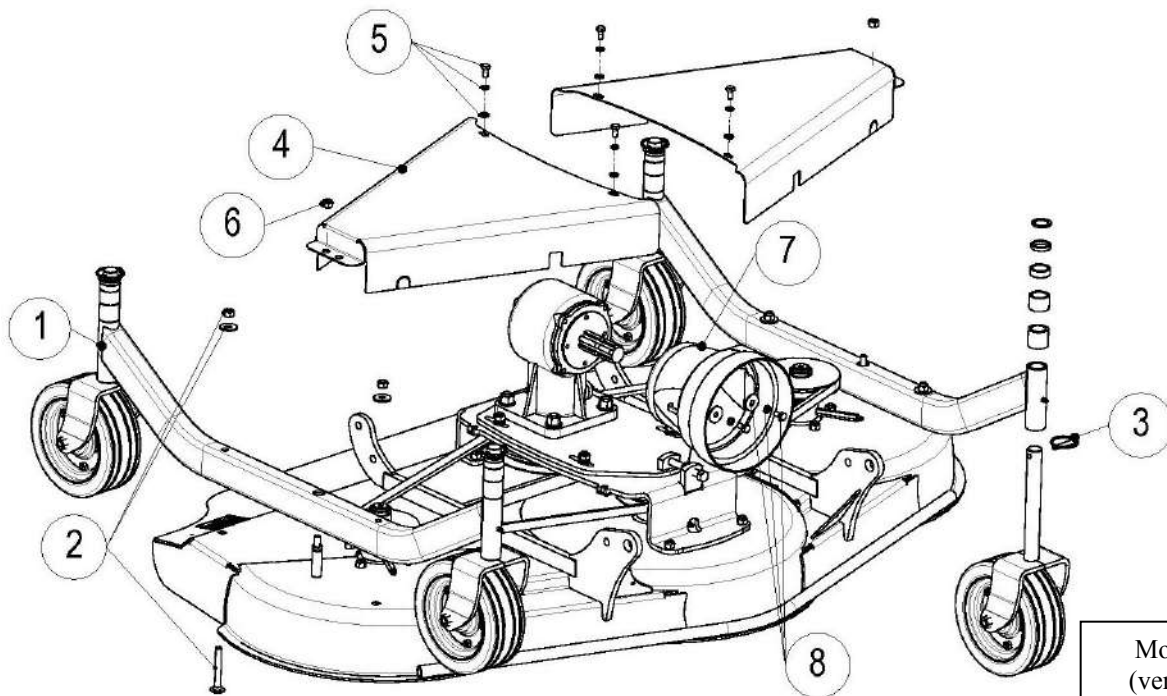
Wheel support and protection carter:

- 1) **For rear ejection models**, place the wheel axles (1) on the chassis and tighten the 4 sets of screws (2) (Screw + large washers + locknut). For the moment do not mount the 2 nuts (6).

For side ejection models, on the right side, mount beforehand the side deflector (9) with the help of 2 sets of screws (10) (Oval head screw interior + locknut).

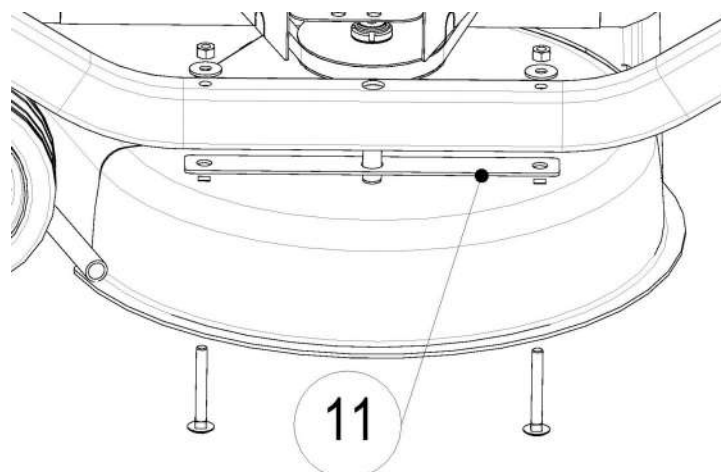
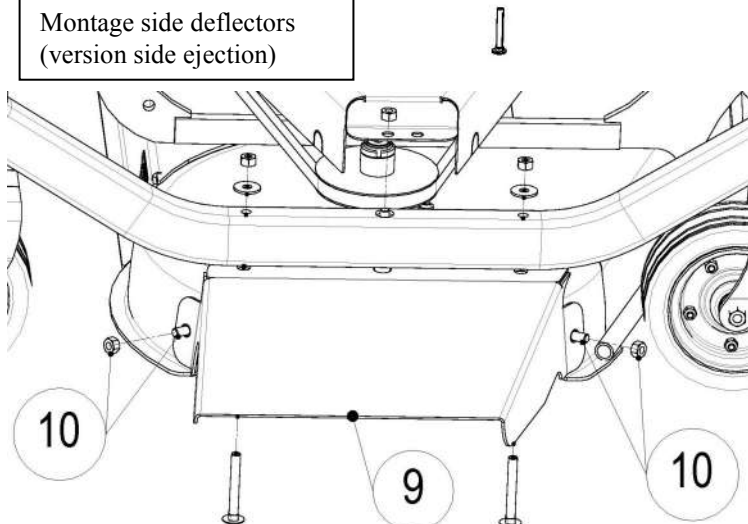
On the left side, put chock (11) before mounting the axle.

- 2) Connect the wheel arms on the wheel supports stacking the chocks depending on the desired cutting height (see chapter « adjustment of cutting depth ») then lock with clip pin (3).
- 3) Place the carters (4), tighten with the help of 4 sets of screws (5), (flat washers + lock washer + screw). Tighten now the ends of the carters with the nut (6).
- 4) Place the guard cone (7) and tighten with 2 sets of screws (8) (large washer + lock washer + screw).



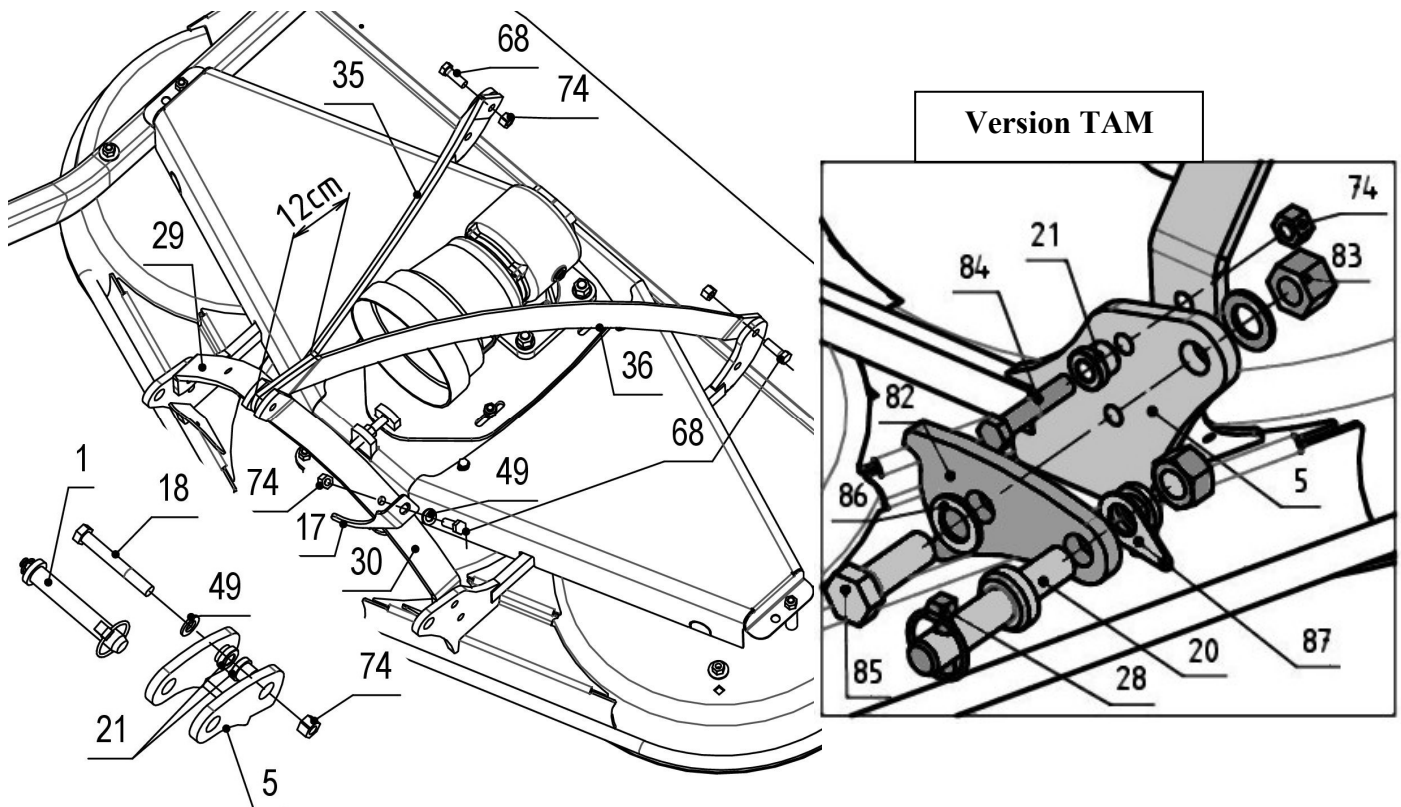
Montage axle chocks
(version side ejection)

Montage side deflectors
(version side ejection)

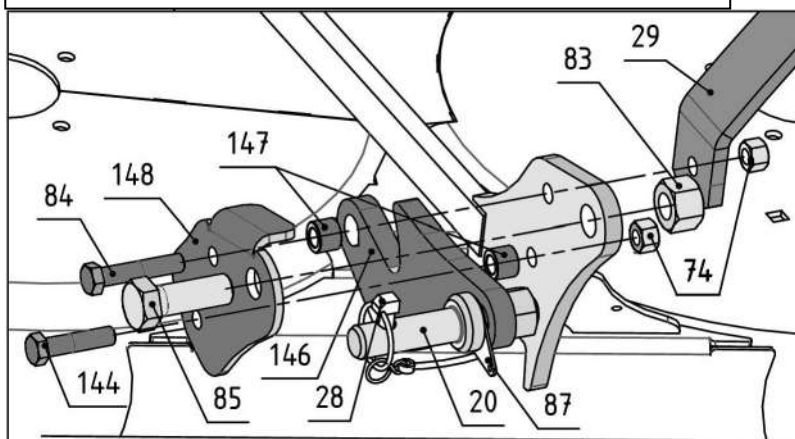


3° Point Linkage TAM /TAMPRO :

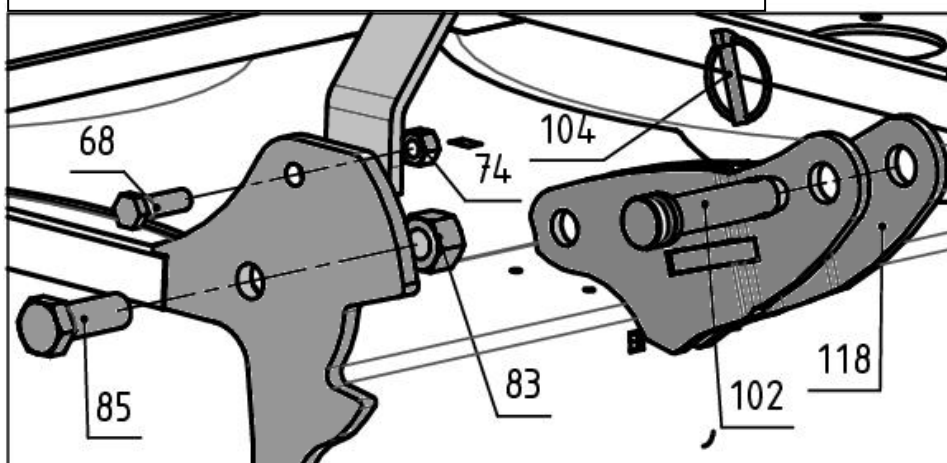
1. **Place the 2 tie rods** the big fold (12 cm) at the top of the linkage (right = No.35, left = No.36) with the screws No.68 M12x35 + locknuts No.74. Do not tighten and leave free.
2. **Place the 2 stems** interior side and fixation hole No.17 below (right = No.29, left = No.30)
 - 2.1. **Version TAM :** fix the base with a screw No.84 M12x60 + ring No.21 + locknut No.74. Do not tighten and leave free.
 - 2.2. **Version TAMPRO except 230 :** Place the assembly Linkage Arm No.146 + right or left Plate No.148 + 2 spacers No.147 with screws Nr.84 M12x60 and No.144 M12x50.
MPlace the stems (right = No.29, left = No.30) and then the 4 locknuts No.74. Do not tighten and leave free.
 - 2.3. **Version TAMPRO 230 :** fix bottom of the stems with the screw No.68 M12x35 + locknut No.74. Do not tighten and leave free.
3. **Place the upper clevis (5) :**
 - Place from the interior of the clevis the 2 L-section rings No.21.
 - Insert the end of the stems and tie rods of the clevis between the 2 rings, then place the screw No.18 (M12x90) and the washerNo.49.
 - Place the locknut No.74 and tighten firmly. Make sure that the upper clevis pivots freely.
 - Place the upper linkage axle and tighten all the screws.
4. **Mount the floating arms:**
 - 4.1. **Version TAM :** Mount the arms No.82 with the screw No.85 M20x55 + 2 washers No.86 + locknut No.83. Tighten freely without float on the floating arms. Mount the pitons No.20 with the leg No.87 where to attach the pin No.28.
 - 4.2. **Version TAMPRO except 230 :** Place the screw No.85 M20x55 + locknut No.83. Tighten freely without float on the floating arms. Mount the pitons No.20 with the leg No.87 where to attach the pin No.28
 - 4.3. **Version TAMPRO 230 :** Place the arm No.118 with screw No.85 M20x55 + locknut No.83. Tighten freely without float on the floating arms. Mount the pitons No.20 with the leg No.87 where to attach the pin No.28.
5. **Mount the cardan support (17) with screw (68) M12x35, washer (49) and locknut (74).**



TAMPRO 120/150/180EA-EL_140/170M

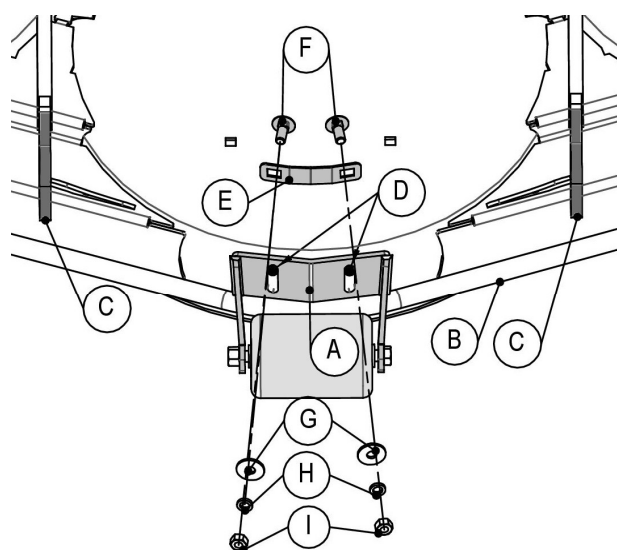


TAMPRO 230 EA/ 230M



Montage Anti-Scalping Kit (KASCAL):

1. Put the set support and roller (A) on the front tube of the case (B) and center depending on the (C).
2. Trace with a marker the position of each hole at the top of the 2 adjusting holes (D).
3. Drill 2 holes Ø13 at these positions.
4. Fix the assembly with flange (F) and the 2 screws (F) (CC Ø10x25) from the inside of the case. Bolt without tightening with a large washer Ø10 (G), the washers W (H) and the nut (I).
5. Adjust the roller height between 1 - 3 cm under the case and tighten.



• LUBRICATION

See chapter « daily maintenance » page 13.

INSTALLATION AND COMMISSIONING

The installation and commissioning of the tool are the responsibility of the MAJAR reseller. The rotary slasher must be delivered fully mounted, lubricated and adjusted to the normal operating conditions.



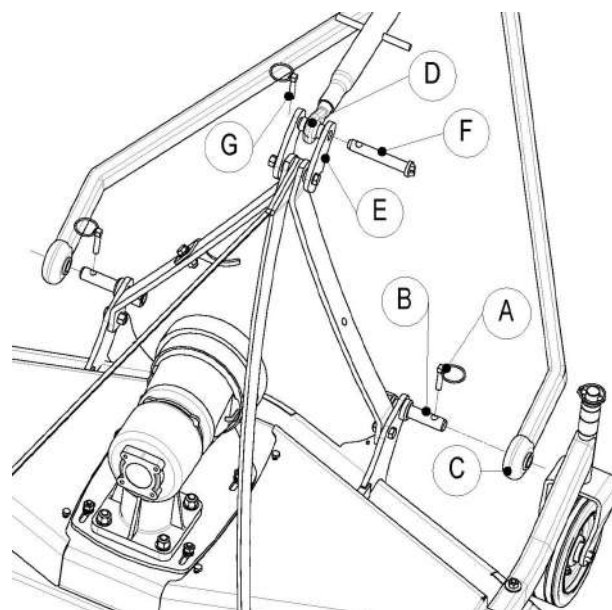
DANGER Make sure that the characteristics of the tractor are adapted for the machine, particularly the power, lift capacity, linkage type, speed and rotation direction of the power grip. Please read this notice, the cardan manual the tractor notice completely prior to use.



WARNING Always wear safety footwear, protection equipment for eyes, ears and hands when climbing onto the machine. Do not allow anyone to sit on the driving position when mounting the machine.

COUPLING OF THE MACHINE

- Remove the pins No.A.
- Move back the tractor until the inferior arms are line-up with the axis of the inferior connecting rod No.B.
- Stop the engine, shift the transmission to neutral, apply the handbrake and remove the key.
- Insert joints of the ends of the arms No.C on the axis of inferior connecting rod No.B, secure them with pins No.A. Adjust the arm idlers of the tractor to have a lateral movement of 4cm.
- Couple the 3° point No.D on the floating attachment No.E with axis of the upper rod No.F and the pin No.G.
- Adjust the 3° point stem: See chapter «adjustment of floating attachment» (page 12).
- Place the cardan transmission. (see next chapter)
- Make sure that there is enough space between the machine and the tractor lifting the machine.



CARDAN SHAFT SETTING UP



DANGER More detailed information in the specific manual of the cardan which is an initial part of the safety documentation to read carefully. In the event of a discrepancy with the following, follow the instructions given in the specific manual of the du cardan. The cardan must have CE marking.



WARNING The safety devices (Freewheel, friction torque clutch ...) must be imperatively placed nearby the machine.

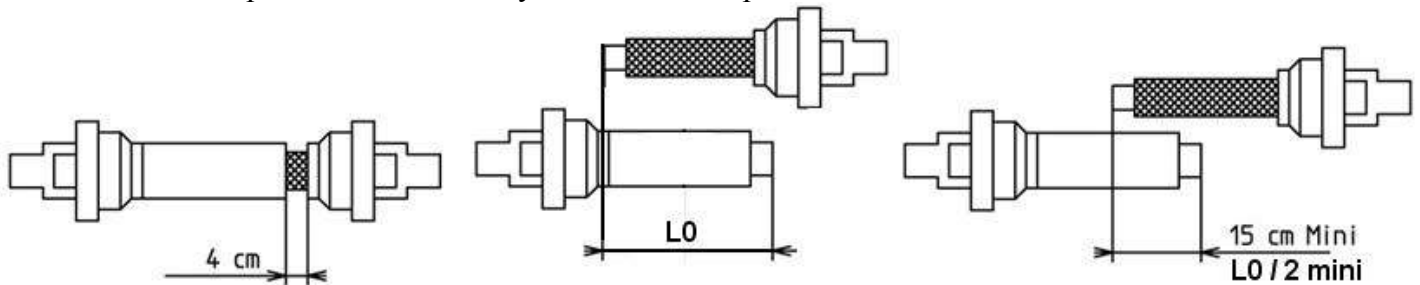
Adjust the length of the transmission :

Make sure that the transmission is in the shortest linkage position and the remaining travel must be about 4 cm. Cut the drive shaft if necessary, cut the protectors about 0.5 cm to facilitate the assembly.

Cardan disassembled and fully input, determine the length « L0 » of the tubes. With the machine on the tractor, make sure that the transmission is at the longest linkage position, the remaining travel must be 15 cm and at least half of « L0 » in this position.

Lubricate the tube sliding before assembly.

These operations are normally detailed in the specific cardan manual.

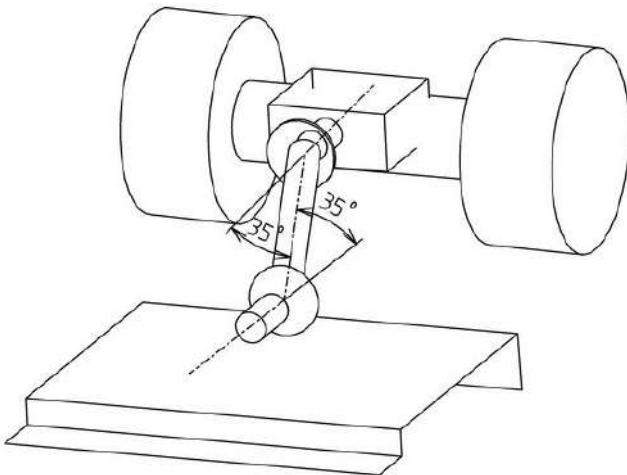


Setting up the transmission :

Connect the transmission to tracteur, check the locking device is locked in the shaft. Connect in the same way the tractor and check that both ends of the cardan are locked. Attach the protectors of the transmission on the tractor and tool so that they will not turn with the transmission.



Check that no parts of the mower deck or the tractor get in contact with the transmission when lifting the machine. Check that you do not reach the maximum angle of the transmission



NEVER EXCEED THE MAXIMUM ANGLE OF THE TRANSMISSION

ADJUSTMENT AND USE



Check the tightening of the bolts (see table tightening torque at the end of the manual. Check the presence and fixation of safety equipment (carter, bol ...).

The safety is a challenge that concerns the most while designing and manufacturing this tool. However, the efforts of the constructor may be shattered due to user carelessness. The accident prevention depends on prudence and training of staff in charge of using and maintenance of the machine. The best safety device is a careful and informed user; we ask you to be this user.

The user of this machine is responsible for the use and safety. The user has to be qualified and trained to the machine and also know the tractor. Read all the safety instructions.



WARNING

Never use the machine without having done the operations described in chapter « daily maintenance ».

This machine is designed to cut lawn. It is not designed to be hitched to inappropriate power and weight engines, to work on excessively pebbly ground, to cut hard objects, stones, garbage. It should not be used to transport persons or material.

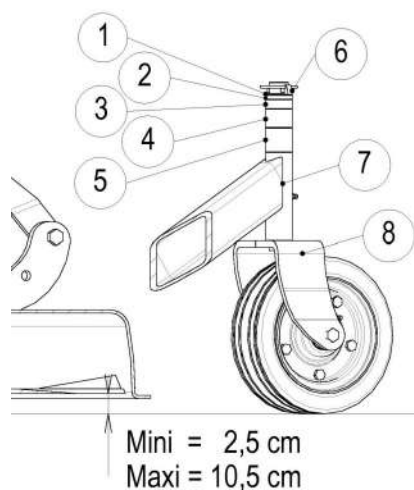


DANGER

The following operations must be only and exclusively done when the engine is switched off, handbrake applied. If necessary lift the machine, place the supports to prevent from falling or failure of the lifting of the tractor.

• ADJUSTMENT OF CUTTING DEPTH:

to adjust the minimal cutting height (2.5cm) place the chocks (1)-(2)-(3)-(4)-(5) between the pin (6) and the wheel arm support (7). Depending on the different combinations to obtain cutting position until maximum 10 cm, keep the machine lifted, remove the pin (6) blocking the wheel assembly (8) on the wheel arm support (7); choose the chock height to obtain the desired cutting height, put them between the wheel arm (8) and the wheel arm support (7) and leave the rest of chocks between pin and wheel arm support. Reblock the wheel assembly (8) with pin (6).

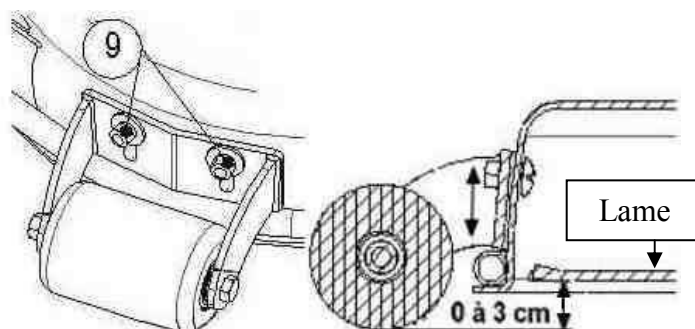


• ADJUSTMENT OF L'ANTI-SCALPING (on TAMPRO or KASCAL on TAM) :

The central positioning of this roller avoids the central blade to push on soil during mowing on irregular terrains.

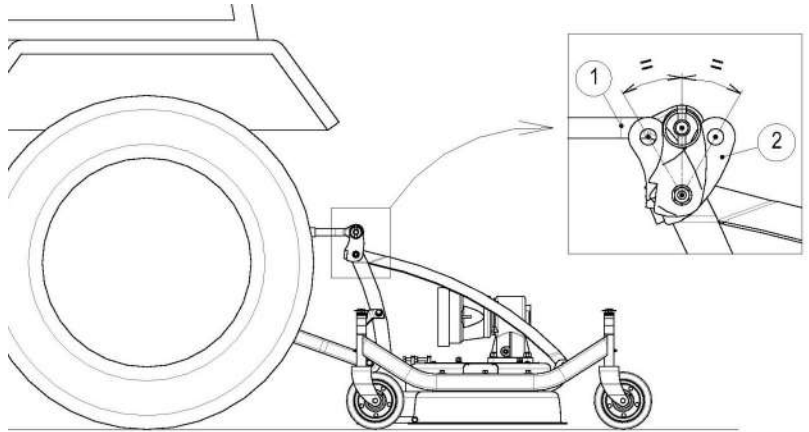
Adjust:

- Loosen the 2 nuts (9).
- Lower and raise the assembly depending on the desired height (0 - 3 cm).
- Tighten the 2 nuts (9).



• **ADJUSTMENT OF FLOATING CLIP**

Lower the machine until the wheels push on a hard and flat surface. Operating on the 3° point arm (1), the floating clip (2) needs to move forward and backwards, depending on variations in terrain.



• **USE**



WARNING

Always wear close-fitting clothing to avoid to be snatched by the moving parts. Use safety footwear and protective equipment for eyes, ears and protection from the dust.

Do not start the machine when lifted. Lower on the ground and lift a few centimeters before connecting power grip with the motor idling. Lower the machine in work position. Increase the engine speed until the nominal speed indicated on the dashboard of the tractor.

Note: for mowers with independents cutting cells TAMPRO 140-170-230

Mow first the 2 zones half turn at the end of land plot, a small strip of uncut grass when turning requires a recovery of this zone.

• **Speed**

The recommended working speed is between 5 and 10 km/h. It depends on the height and the nature of the cutted grass.

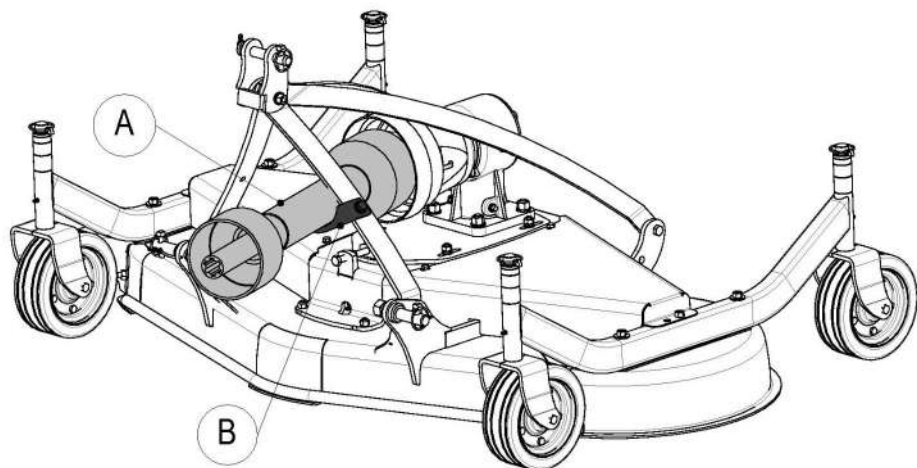
Uncoupling and storage



WARNING

The machine must be stored in an area sheltered from bad weather on a firm and level ground.

- Take the machine to storage area
- Put on the ground lowering the lifting of the tractor
- Turf off the ignition and apply the handbrake
- Disengage the PTO shaft on the tractor, the inferior arms and the superior 3 point
- Place the shaft drive (A) on the side support (B).



MAINTENANCE BY USER



DANGER

Prior to maintenance or repair work on the machine, stop the engine, apply the handbrake and remove the key. Never let anyone else to the driver's cab. If lifting the machine is necessary, place the supports to prevent falls or failure of the lifting system.

DAILY MAINTENANCE BEFORE STARTING WORK

- Check the condition and fixation of the protections of belts, cardan shaft and angular gearbox.
- Make sure that there are no leaking traces, if not contact your reseller to repair the machine.
- Clean entirely the machine from grass or dirt accumulations which can reduce performance and can mask failure or leakage.
- Check the presence, fixation and degree of wear of the blades. They should never be twisted, damaged or worn.
- Lubricate the machine (see paragraph « lubrication of the mower page 14).



WARNING

All blades should be fitted and in good conditions to avoid imbalance on the mower which could cause vibrations and rapid deterioration of the device. Damaged or twisted blades reduce performances, need more power and can worsen the transmission system and the chassis.

INITIAL USE

- After 2 hours of use, control tightening of all fasteners.
- See table Tightening torque

EVERY 40 HOURS WORKED

- Control tightening of all fasteners.
- Grease the 4 wheels and wheel arms (see paragraph « lubrication of the mower »).
- Grease the blade hubs (see paragraph « lubrication of the mower »).
- Grease the blade hubs (TAM230) (see paragraph « lubrication of the mower »).
- Grease the crosspieces and cardan shaft (see notice of cardan).



Clean the grease gun and use the grease pump. Do not leave excess grease on the pieces

EVERY 100 HOURS WORKED

- Check the oil level of the angular gearbox: make sure that the oil arrives at the plug (N), if necessary complete on the plug (R). Use oil 80W90 A.P.I. G.L.4 or 5. The first drain must be done after 50 hours. The next after 500 hours.

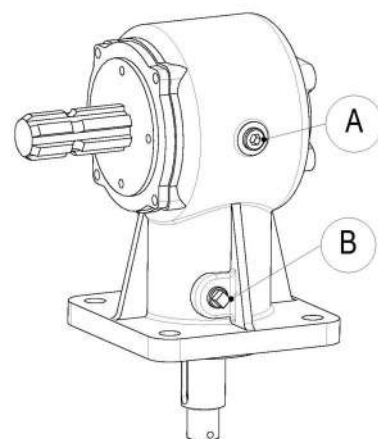


Never fill up completely the gearbox.

- Control the belts of transmission.

EVERY 500 HEURES WORKED

- Drain the gearbox with a syringe or the plug B depending on model. Capacity about L.



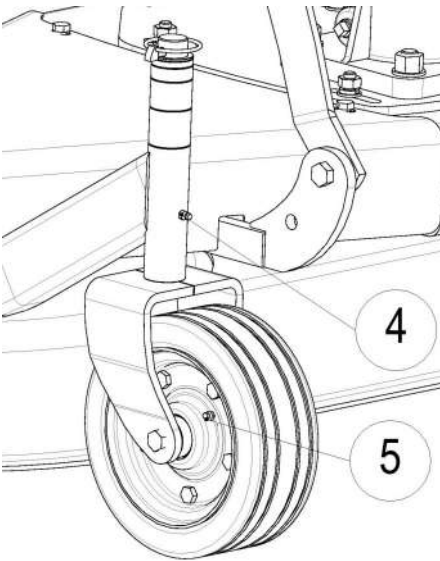
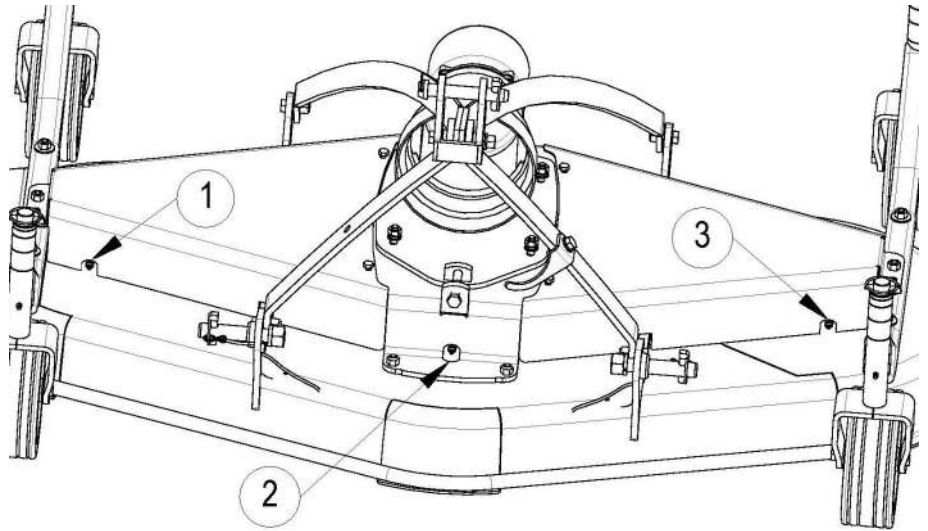
LUBRICATION OF THE MOWER (Every 40 heures)

Do not lubricate excessively: one or two presses of the grease gun is sufficient and clean the surplus grease.

Lubrication of the blade hubs:

- 3 oilers 1,2,3.

TAMPRO230 : - 5 oilers (2 in front 3 in the back)



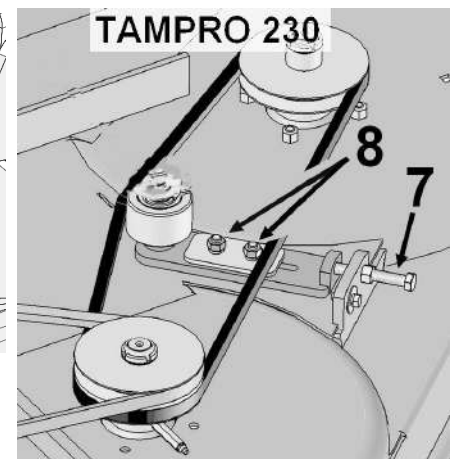
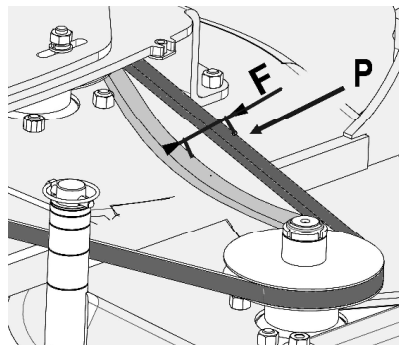
Lubrication of the wheel arms and wheels:

- 4 oilers (4)
- 4 oilers (5) (except TAMPRO with pneumatic or iron wheels)

REGLAGE DE LA TENSION DES COURROIES

The belt tension is adjusted in factory, **after a running-in period (about 2 - 4h) and then regularly, it is important to check the tension** and if necessary adjust tension.

« F » must be about 15mm under effort « P » of 10 Kg.



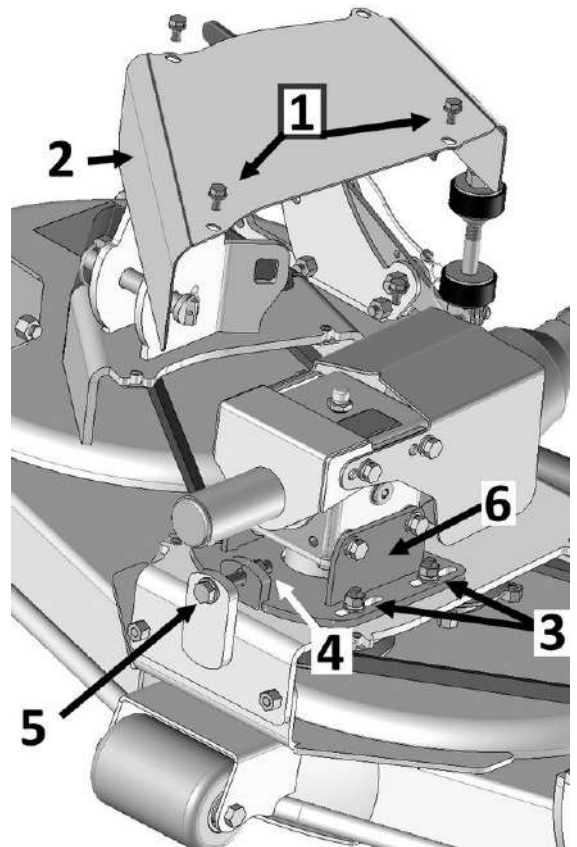
Side belts: TAMPRO 230 only

- Remove the 5 screws and the belt cover.
- Release the 2 nuts (8) and the counter nut of screw (7) of the idler support arm.
- Left side (on the picture): tighten the screw 12x80 (7).
- Right side: release screw 12x130.
- Lock all nuts.

Central belts: all models

If you are unable to obtain an identical tension on the 2 belts, you need to replace by 2 new belts without fail.

- Remove screws (1) and nuts (2), then put the 2 crankcases (3).
- Release the 4 nuts (4) blocking the slide of the multiplier gearbox and the counter nut of the screw (5).
- Release screw (5) to move the slide until the right tension.
- Block the counter nut of the screw (5) and the 4 nuts of the slide.
- Remount the protective casings.



REPLACEMENT OF BLADES



WARNING The blades are sharp and may

cause injury, always wear gloves when handling them, be careful not to cut yourself.

Couple the machine to the tractor, set down on the ground on chocks so that the blades turn free. Stop the engine, apply the handbrake and remove the key.



DANGER

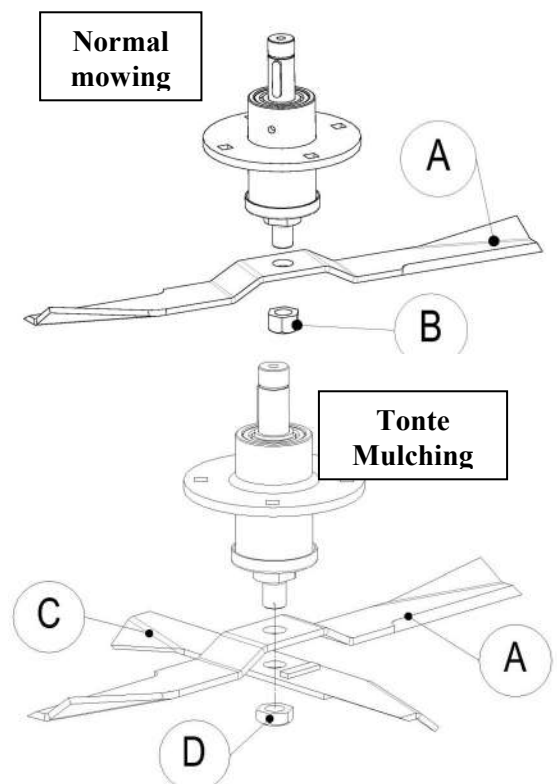
When you replace the blades, you are required to change the locknuts. Contact your MAJAR reseller to obtain original spare parts. Do not replace by other spare parts with different characteristics.

Disassemble and reassemble the blades hub by hub to keep the others as example for the setting up the new blades. Sur chaque moyeu est montée soit une lame pour les versions à éjection, doit 2 lames pour les versions Mulching.

Ensure: Cutting edge side and tightening of the selflocking nut.

Mount a selflocking nut (D) when the hub is equipped with 2 blades (A) + (C).

Block securely the bolts and check again the tightening after 2 hours of use (see table Tightening Torque).



MALFUNCTION AND REMEDY

PROBLEM	CAUSE	REMEDY
Transmission system is noisy	The hub bearings are worn or damaged	Have the machine controlled by reseller and replace bearings.
	The belts are worn or not bended	Have the machine controlled by reseller , bend the belts or change.
	There is not enough oil in the gearbox	Refill the gearbox as mentionend in the manual
The mower vibrates	The blades are unbalanced	Check and change damaged blades
	Damaged bearings	Have the machine controlled by reseller
	Wrong rotation speed	Check speed and rotation direction of the power grip
	Damaged cardan shaft	Have the machine controlled by reseller
	Bolt fastening loosened	Retighten bolts
	Forward speed too high	Reduce speed
	Bushweed or brambles in cutting zone	The machine is not suited for this job
Lawn is badly cut	Forward speed too high	Reduce speed
	Height of cut grass too heigh	Change cutting height
	Blades worn or damaged	Check and change damaged blades
	Grass too wet	Mow when grass is dry
	Belt worn or loose	Tighten or change belt
	To low speed on power grip	Check and increase speed, if necessary

TIGHTENING TORQUE

Screw diameter (mm)	Wrench size (mm)	Torque setitng (daN.m)
8	13	2
10	15/16/17	5
12	18/19	8.5
14	21/22	13
16	24	21.5
18	27	30
20	30	43.5

C.E DECLARATION OF CONFORMITY

The letters **CE** on the identification plate of this machine certify that it is conforming to EC machine directive 2006/42/CE.

MAJAR	
11850 CARCASSONNE Tel.: 04 68 25 38 16	
TYPE :	<input type="text"/>
N°de SERIE:	<input type="text"/>
Année de construction	<input type="text"/>
CE	

The Director,
Mr Checa

GUARANTEE

Each new manufactured by MAJAR SA is guaranteed as follows below, warranted against defects of construction and assembly and/or of the materials when used appropriately during 1 year.

1° This guarantee is limited to 1 year to the replacement of pieces mounted and recognized as faulty by MAJAR.

2° All pieces requested on guarantee must be returned to MAJAR for inspection, reparation or replacement prepaid postage with proof of purchase of the machine, serial number and carefully packed for protection.

3° The machine must not be damaged, repaired or maintained without authorization from MAJAR. The machine must not have had an accident, been misused, abused or used acting not conform instructions and specifications contained in this manual

This guarantee does not oblige MAJAR or representative to reimburse labor costs or transport costs of the machine for reparation.

NO GUARANTEE WILL BE APPLIED TO THIS EXCEPT THE LEGAL WARRANTY FOR HIDDEN DEFECT.

MAJAR CANNOT BE HELD RESPONSIBLE FOR DAMAGES OR COSTS INCURRED BY THE MACHINE FOR PAR EXAMPLE:

- 1 RENTAL FEES FOR MATERIAL
- 2 LOST OF SALE
- 3 EXECUTION OF WORK CARRIED OUT NORMALLY BY THE MACHINE

MAJAR ASSUMES NO OBLIGATION AND DOES NOT ALLOW ANYBODY TO ASSUME ANY OTHER OBLIGATION THAN THEM IN THE 3 PREVIOUS PARAGRAPHES.

To obtain the name of resseller, contact:

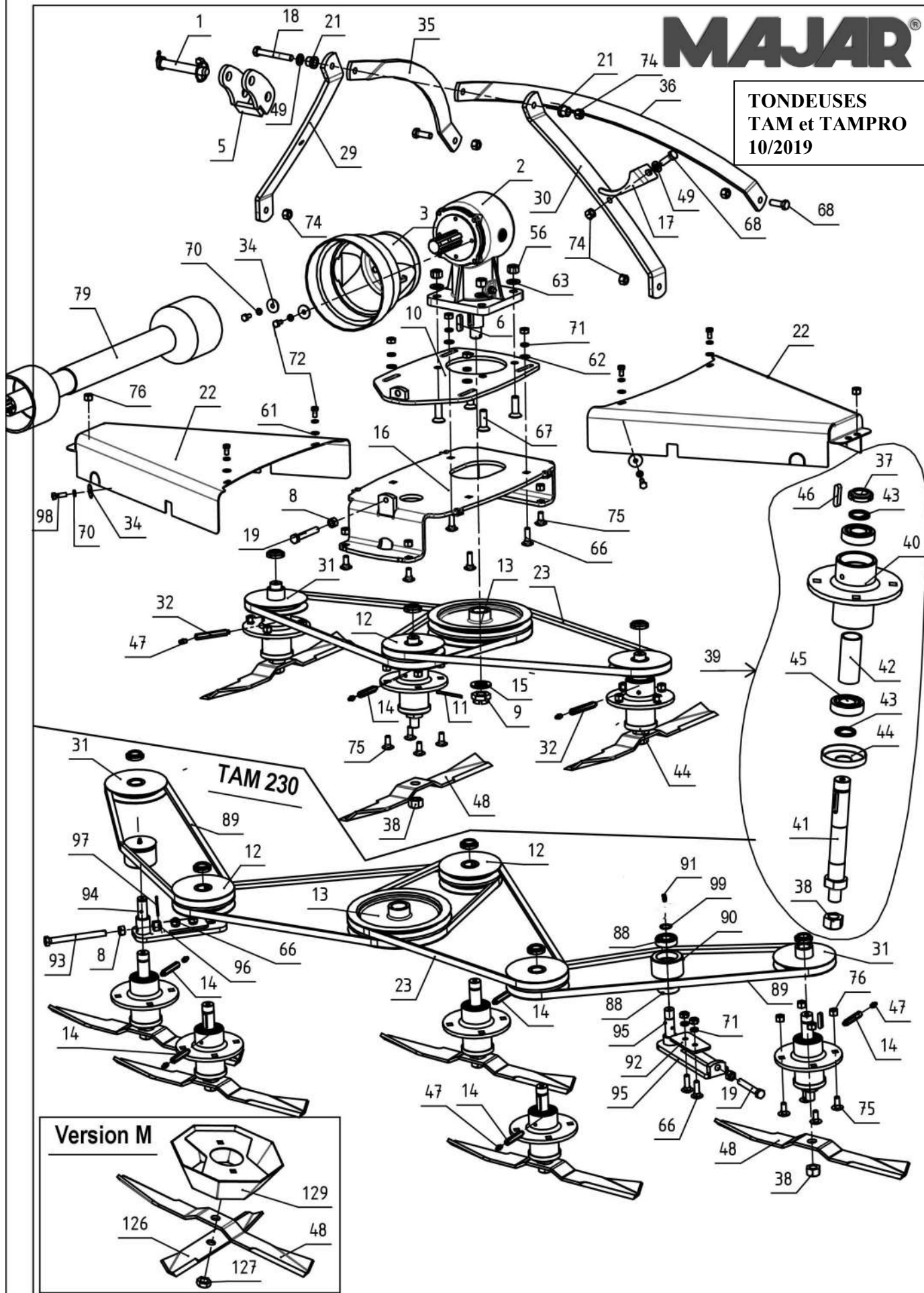
MAJAR S.A
1 Route de Montréal
CS30074
11890 CARCASSONNE Cedex 9
FRANCE

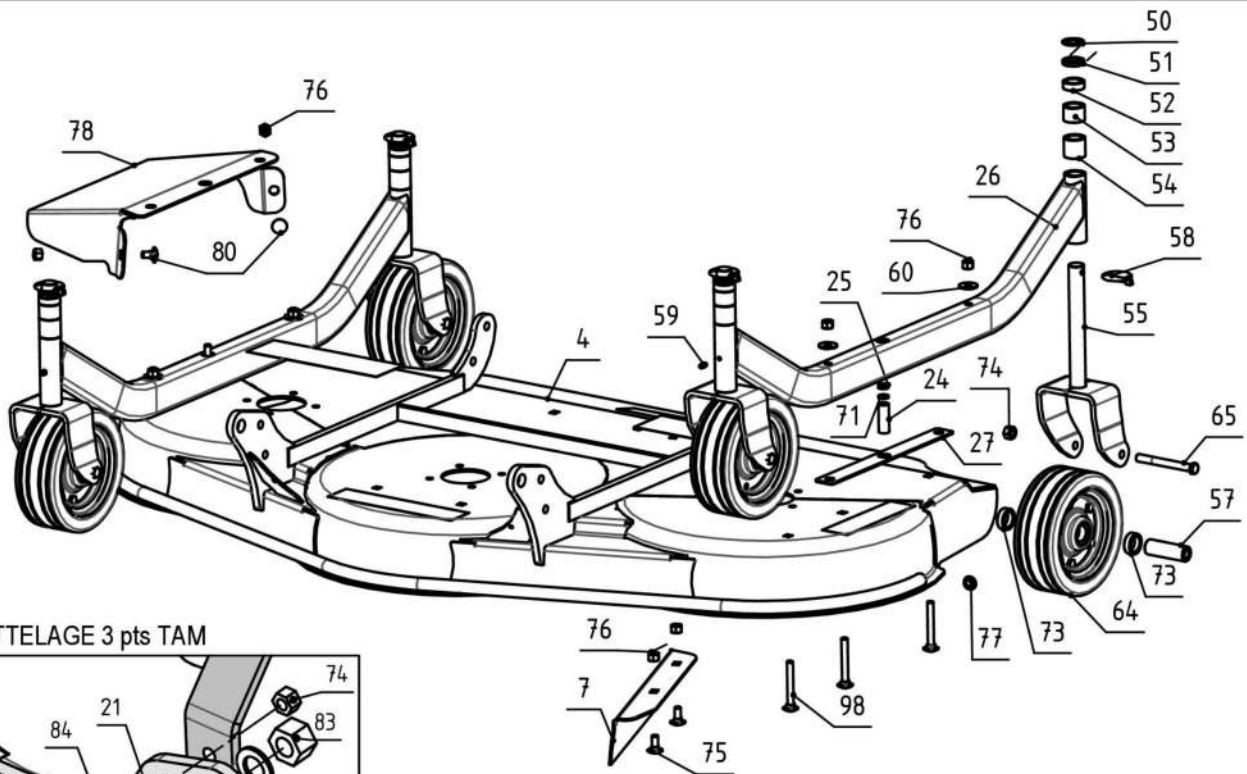
SPARE PART LIST

According to Article L.111-3 of the Consumer Code and of the Decree implementing the Code N°2014-1482 of 9th of december 2014, the availability duration of indispensable spare parts for use of MAJAR material is **7 years**.

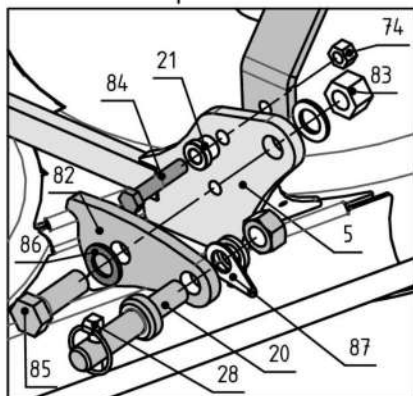
MAJAR®

**TONDEUSES
TAM et TAMPRO
10/2019**

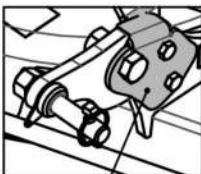




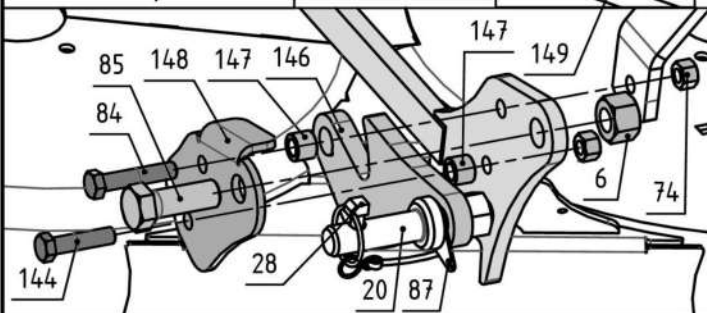
ATTELAGE 3 pts TAM



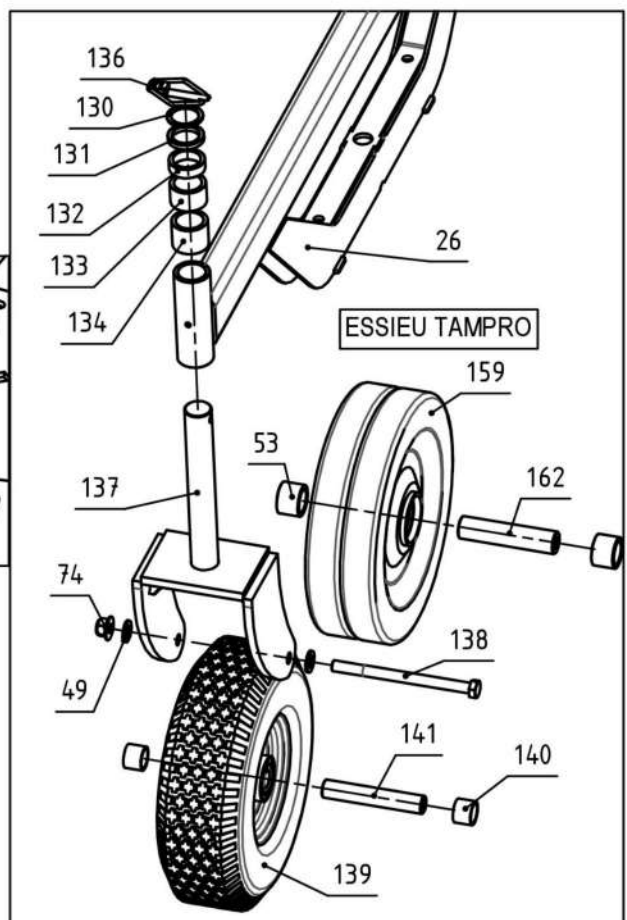
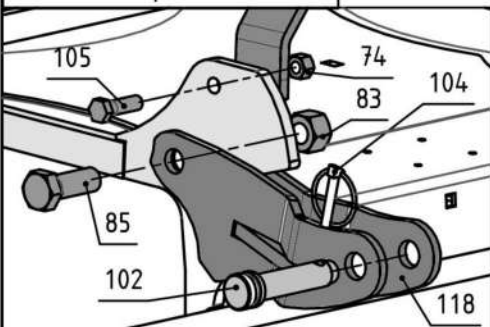
PATTE GAUCHE



ATTELAGE 3 pts TAMPRO



ATTELAGE 3 pts TAMPRO 230



	Designation	Ref. Nbre ->	TAM120EA	TAM120EL	TAM150EA	TAM150EL	TAM180EA	TAM180EL	PRO150EA	PRO150EL	PRO180EA	PRO180EL	PRO140M	PRO170M	PRO230M	PRO230EA
1	SUPERIOR AXLE	144101	1	1	1	1	1	1	1	1	1	1	1	1	1	1
2	GEARBOX 540TRS S.N.	082721	1	1	1	1	1	1	1	1	1	1	1	1	1	1
3	PROTECTION BOL	082714	1	1	1	1	1	1	1	1	1	1	1	1	1	1
4	CASE 120A	582496	1	-	-	-	-	-	-	-	-	-	-	-	-	-
4	CASE 120L	582499	-	1	-	-	-	-	-	-	-	-	-	-	-	-
4	CASE 140M	582583	-	-	-	-	-	-	-	-	-	-	1	-	-	-
4	CASE 150A	582495	-	-	1	-	-	-	1	-	-	-	-	-	-	-
4	CASE 150L	582497	-	-	-	1	-	-	-	1	-	-	-	-	-	-
4	CASE 170 MULCH	582584	-	-	-	-	-	-	-	-	-	-	-	1	-	-
4	CASE 180A	582505	-	-	-	-	1	-	-	-	1	-	-	-	-	-
4	CASE 180L	582506	-	-	-	-	-	1	-	-	-	1	-	-	-	-
4	CASE 230 EA	582586	-	-	-	-	-	-	-	-	-	-	-	-	-	1
4	CASE 230 M	582588	-	-	-	-	-	-	-	-	-	-	-	-	1	-
5	3PTS DRAWBAR COUPLING	582483	1	1	1	1	1	1	1	1	1	1	1	1	1	1
6	PIN // 10 X 8 LG.36	082551	1	1	1	1	1	1	1	1	1	1	1	1	1	1
7	CENTRAL DEFLECTOR 120A	186147	1	-	-	-	-	-	-	-	-	-	-	-	-	-
7	CENTRAL DEFLECTOR 150A	186107	-	-	1	-	-	-	1	-	-	-	-	-	-	-
7	CENTRAL DEFLECTOR 180A	186193	-	-	-	-	1	-	-	-	1	-	-	-	-	-
8	NUT H M12	9900215	1	1	1	1	1	1	1	1	1	1	1	1	3	3
9	NUT M24X2	Z082572R17	1	1	1	1	1	1	1	1	1	1	1	1	1	1
10	GEARBOX SLIDE 120	582520	1	1	-	-	-	-	-	-	-	-	-	-	-	-
10	GEARBOX SLIDE 150/180	582494	-	-	1	1	1	1	1	1	1	1	1	1	1	1
11	PIN V 5/71	9907019	1	1	1	1	1	1	1	1	1	1	1	1	1	1
12	DOUBLE POULEY D=130-2B	186054	-	-	1	1	1	1	1	1	1	1	1	1	3	3
12	DOUBLE POULEY D=80-2B	186038	1	1	-	-	-	-	-	-	-	-	-	-	-	-
13	DOUBLE POULEY D=170-2B	186039	1	1	-	-	-	-	-	-	-	-	-	-	-	-
13	DOUBLE POULEY D=190-2B	186056	-	-	-	-	1	1	-	-	1	1	-	1	-	-
13	DOUBLE POULEY D=220-2B	186055	-	-	1	1	-	-	1	1	-	-	1	-	1	1
14	OILER EXTENSION LG55	186086	1	1	1	1	1	1	1	1	1	1	3	3	5	5
15	WASHER MN O 24	9908025	1	1	1	1	1	1	1	1	1	1	1	1	1	1
16	GEARBOX SUPPORT 120	582507	1	1	-	-	-	-	-	-	-	-	-	-	-	-
16	GEARBOX SUPPORT 150	582493	-	-	1	1	-	-	1	1	-	-	-	-	-	-
16	GEARBOX SUPPORT 180	582508	-	-	-	-	1	1	-	-	1	1	1	1	1	1
17	SUPPORT TRANSM	185435	1	1	1	1	1	1	1	1	1	1	1	1	1	1
18	SCREW H 12X90/30	9961978	1	1	1	1	1	1	1	1	1	1	1	1	1	1
19	SCREW H 12X80/80 - CL.8.8	9961981	1	1	1	1	1	1	1	1	1	1	1	1	2	2
20	AXLE B.I. COMPLET	080307	2	2	2	2	2	2	2	2	2	2	2	2	-	-
21	BUSHING	186047	4	4	4	4	4	4	2	2	2	2	2	2	2	2
22	CARTER BELT 120	186131	2	2	-	-	-	-	-	-	-	-	-	-	-	-
22	CARTER BELT 150	186106	-	-	2	2	-	-	2	2	-	-	-	-	-	-
22	CARTER BELT 180	186132	-	-	-	-	2	2	-	-	2	2	-	-	-	-
22	CARTER RIGHT 140M	186450	-	-	-	-	-	-	-	-	-	-	1	-	-	-
22	CARTER RIGHT 170M	186452	-	-	-	-	-	-	-	-	-	-	-	1	-	-
22	CARTER RIGHT 230	582590	-	-	-	-	-	-	-	-	-	-	-	-	1	1

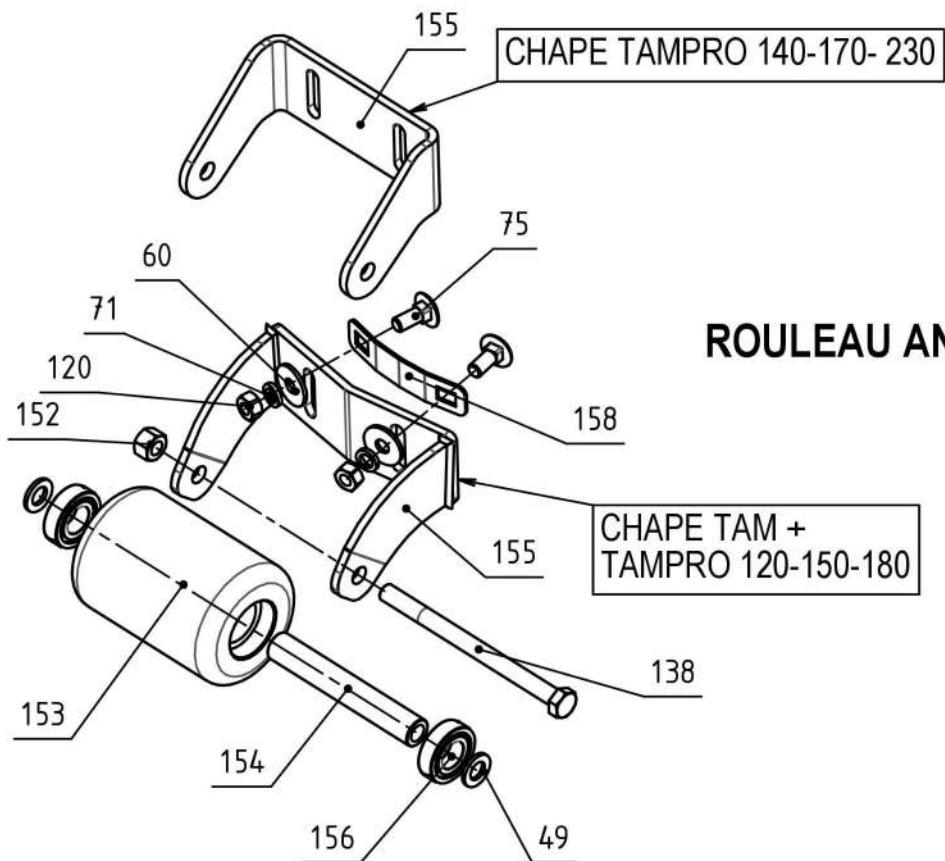
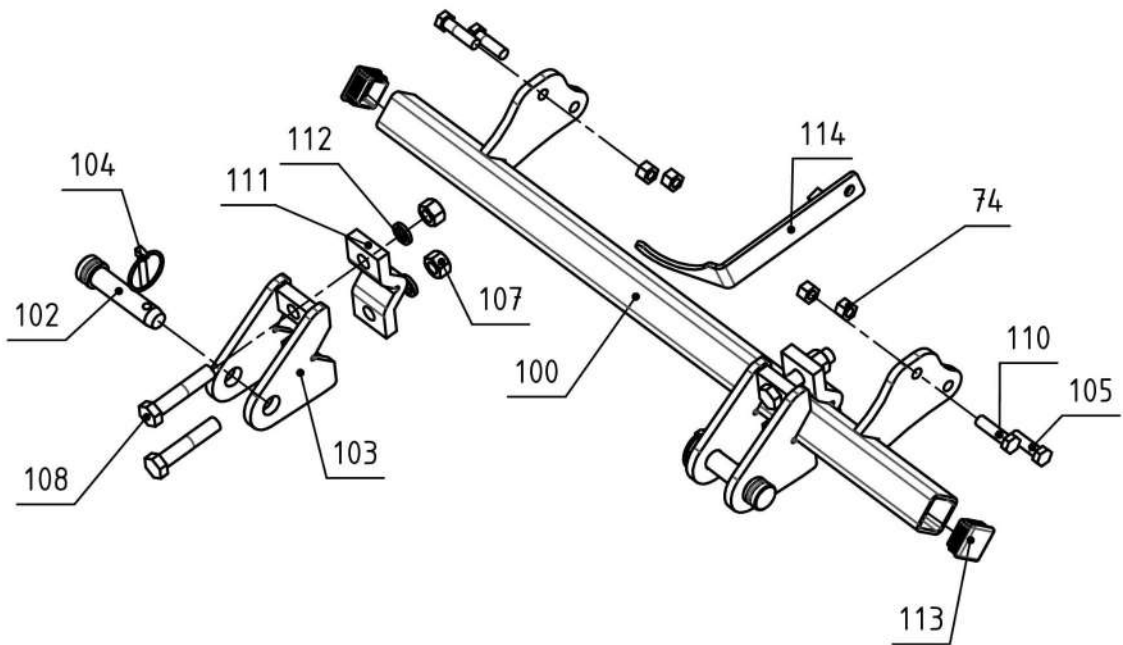
	Designation	Ref. Nbre ->	TAM120EA	TAM120EL	TAM150EA	TAM150EL	TAM180EA	TAM180EL	PRO150EA	PRO150EL	PRO180EA	PRO180EL	PRO140M	PRO170M	PRO230M	PRO230EA
22	CARTER LEFT 140M	186451	-	-	-	-	-	-	-	-	-	-	1	-	-	-
22	CARTER LEFT 170M	186453	-	-	-	-	-	-	-	-	-	-	-	1	-	-
22	CARTER LEFT 230	582591	-	-	-	-	-	-	-	-	-	-	-	-	1	1
23	BELT B73	082729	-	-	-	-	2	2	-	-	2	2	-	-	-	-
23	BELT B50	082723	2	2	-	-	-	-	-	-	-	-	-	-	-	-
23	BELT B67	082722	-	-	2	2	-	-	2	2	-	-	-	-	-	-
23	BELT B68	082778	-	-	-	-	-	-	-	-	-	-	2	-	2	2
23	BELT B75	082779	-	-	-	-	-	-	-	-	-	-	-	2	-	-
24	DOUILLE ENTRETOISE	186118	2	2	2	2	2	2	2	2	2	2	2	2	2	2
25	NUT LOW H 0 10	9900212	2	2	2	2	2	2	2	2	2	2	2	2	2	2
26	AXLE TAM120A	582527	2	-	-	-	-	-	-	-	-	-	-	-	-	-
26	AXLE TAM120L	582528	-	2	-	-	-	-	-	-	-	-	-	-	-	-
26	AXLE TAM150A	582492	-	-	2	-	-	-	-	-	-	-	-	-	-	-
26	AXLE TAM150L	582500	-	-	-	2	-	-	-	-	-	-	-	-	-	-
26	AXLE TAM180A	582529	-	-	-	-	2	-	-	-	-	-	-	-	-	-
26	AXLE TAM180L	582530	-	-	-	-	-	2	-	-	-	-	-	-	-	-
26	AXLE TAM-M	582587	-	-	-	-	-	-	-	-	-	-	2	2	2	-
26	AXLE TAMPRO 150	582573	-	-	-	-	-	-	2	2	-	-	-	-	-	-
26	AXLE TAMPRO 180	582574	-	-	-	-	-	-	-	-	2	2	-	-	-	2
27	CHOCK AXLE 120L	186133	-	1	-	-	-	-	-	-	-	-	-	-	-	-
27	CHOCK AXLE 150L	186119	-	-	-	1	-	-	-	1	-	-	-	-	-	-
27	CHOCK AXLE 180L	186134	-	-	-	-	-	1	-	-	-	1	-	-	-	-
28	RING PIN Ø10+LIEN	075568	2	2	2	2	2	2	2	2	2	2	2	2	-	-
29	ROD RIGHT 120-150	186104	1	1	1	1	-	-	1	1	-	-	1	-	-	-
29	ROD RIGHT 180	186196	-	-	-	-	1	1	-	-	1	1	-	1	1	1
30	ROD LEFT 120-150	186105	1	1	1	1	-	-	1	1	-	-	1	-	-	-
30	ROD LEFT 180	186197	-	-	-	-	1	1	-	-	1	1	-	1	1	1
31	SIMPLE POULEY D=130-1B	186053	-	-	2	2	2	2	2	2	2	2	2	2	2	2
31	SIMPLE POULEY D=80-1B	186037	2	2	-	-	-	-	-	-	-	-	-	-	-	-
32	EXTENSION OILER LG74	186085	2	2	2	2	2	2	2	2	2	2	-	-	-	-
34	WASHER LL d=8	9908009	2	2	2	2	2	2	2	2	2	2	2	2	6	6
35	TIE ROD RIGHT 120	186136	1	1	-	-	-	-	-	-	-	-	-	-	-	-
35	TIE ROD RIGHT 150	186102	-	-	1	1	-	-	1	1	-	-	-	-	-	-
35	TIE ROD RIGHT 180	186138	-	-	-	-	1	1	-	-	1	1	1	-	-	-
36	TIE ROD 230-170M	186456	-	-	-	-	-	-	-	-	-	-	-	2	2	2
36	TIE ROD LEFT 120	186137	1	1	-	-	-	-	-	-	-	-	-	-	-	-
36	TIE ROD LEFT 150	186103	-	-	1	1	-	-	1	1	-	-	-	-	-	-
36	TIE ROD LEFT 180	186139	-	-	-	-	1	1	-	-	1	1	1	-	-	-
37	LOCKNUT M25x1.5	082709	3	3	3	3	3	3	3	3	3	3	3	3	5	5
38	SELF-LOCKING NUT M18x1.5	9900548	3	3	3	3	3	3	3	3	3	3	-	-	-	5
39	MOUNTED HUBS	086094	3	3	3	3	3	3	3	3	3	3	3	3	5	5
40	SOLDED HUB	582482	3	3	3	3	3	3	3	3	3	3	3	3	5	5
41	AXLE PLATE	186036	3	3	3	3	3	3	3	3	3	3	3	3	5	5
42	HUB SPACER	186052	3	3	3	3	3	3	3	3	3	3	3	3	5	5

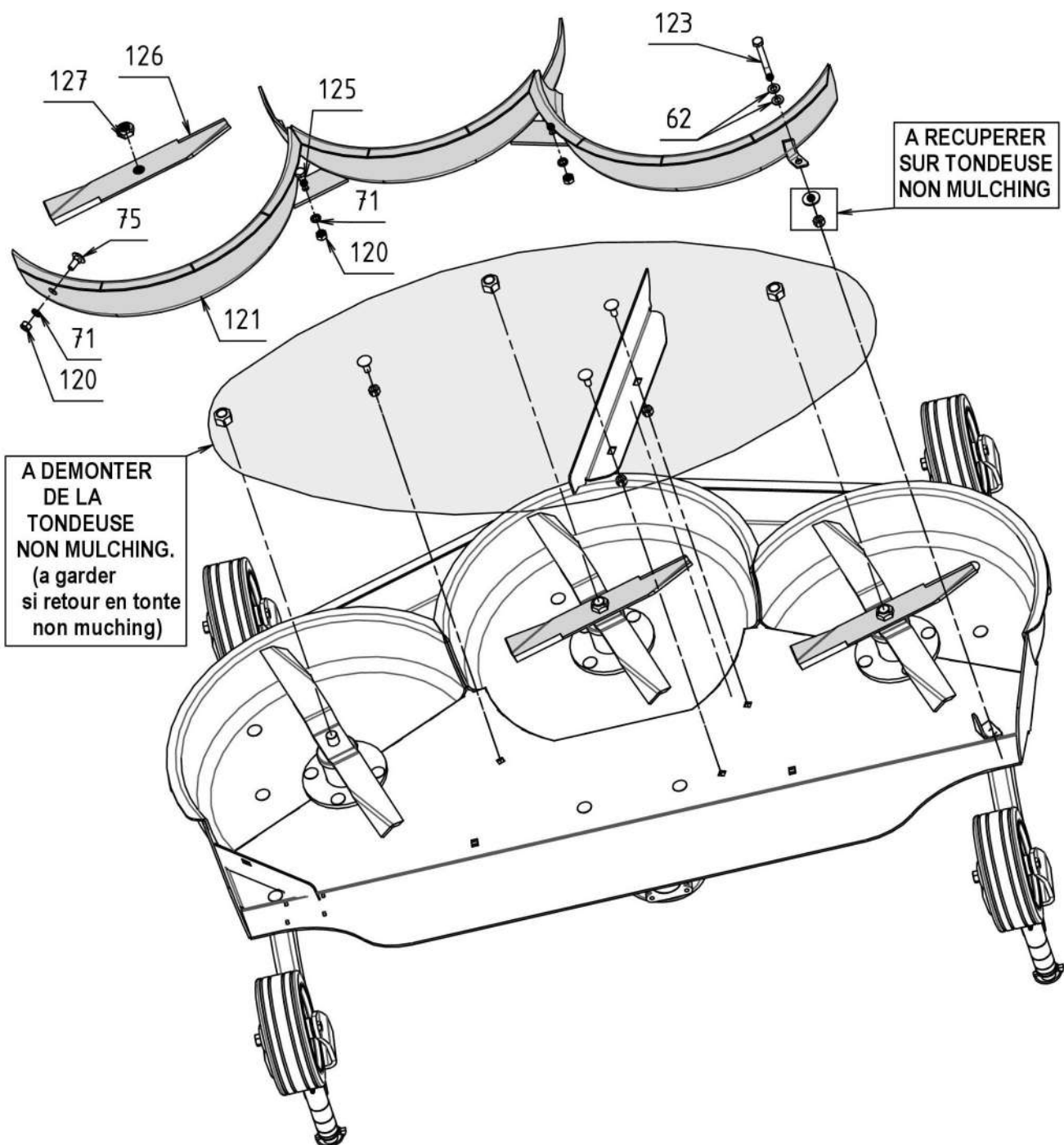
	Designation	Ref. Nbre ->	TAM120EA	TAM120EL	TAM150EA	TAM150EL	TAM180EA	TAM180EL	PRO150EA	PRO150EL	PRO180EA	PRO180EL	PRO140M	PRO170M	PRO230M	PRO230EA
43	DUST COVER WASHER	186032	6	6	6	6	6	6	6	6	6	6	6	6	10	10
44	DUST COVER	186033	3	3	3	3	3	3	3	3	3	3	3	3	5	5
45	BEARING 6205 RS	082712	6	6	6	6	6	6	6	6	6	6	6	6	10	10
46	PIN // 8 X 7 LG.36	082711	3	3	3	3	3	3	3	3	3	3	3	3	5	5
47	OILER M8X125	990720 2	3	3	3	3	3	3	3	3	3	3	3	3	5	5
48	BLADE L=412	082730	3	3	-	-	-	-	-	-	-	-	-	-	-	-
48	BLADE L=512	082731	-	-	3	3	-	-	3	3	-	-	3	-	5	5
48	BLADE L=612	082732	-	-	-	-	3	3	-	-	3	3	-	3	-	-
49	WASHER MN 0 12	990801 2	2	2	2	2	2	2	12	12	12	12	6	6	14	12
50	CHOCK 2MM	186040	4	4	4	4	4	4	-	-	-	-	-	-	-	-
51	CHOCK 6MM	186041	4	4	4	4	4	4	-	-	-	-	-	-	-	-
52	CHOCK 12MM	186042	4	4	4	4	4	4	-	-	-	-	-	-	-	-
53	CHOCK 25MM	186043	4	4	4	4	4	4	-	-	-	-	-	-	-	-
54	CHOCK 32MM	186044	4	4	4	4	4	4	-	-	-	-	-	-	-	-
55	WHEEL BRACKET	582481	4	4	4	4	4	4	-	-	-	-	-	-	-	-
56	LOCK NUT H M14	990054 4	4	4	4	4	4	4	4	4	4	4	4	4	4	4
57	SPACER INTERIOR WHEEL	186050	4	4	4	4	4	4	-	-	-	-	-	-	-	-
58	LYNCH PIN Ø8	082724	4	4	4	4	4	4	-	-	-	-	-	-	-	-
59	OILER M 6X100	990721 0	4	4	4	4	4	4	4	4	4	4	4	4	4	4
60	WASHER Ø10.5x30 ép.2.5	990800 6	6	6	6	6	6	6	6	6	6	6	6	6	8	6
61	WASHER MN 0 8	990800 8	4	4	4	4	4	4	4	4	4	4	4	4	4	4
62	WASHER MN 0 10	990801 0	4	4	4	4	4	4	4	4	4	4	4	4	4	4
63	WASHER MN 0 14	990801 4	4	4	4	4	4	4	4	4	4	4	4	4	4	4
64	TURF WHEEL	082713	4	4	4	4	4	4	-	-	-	-	-	-	-	-
65	SCREW H 12X110/30 CL.8-8	996191 0	4	4	4	4	4	4	-	-	-	-	-	-	-	-
66	SCREW OVAL HEAD CCØ10x35	996070 0	4	4	4	4	4	4	4	4	4	4	4	4	8	8
67	SCREW COUNTERSUNK M14x45 CL10.9	996061 7	4	4	4	4	4	4	4	4	4	4	4	4	4	4
68	SCREW H 12X35/35	996208 0	5	5	5	5	5	5	3	3	3	3	3	3	3	3
69	SCREW OVAL HEAD CCØ10x80 CL.8.8	996070 4	6	6	6	6	6	6	6	6	6	6	6	6	6	6
70	WASHER W 0 8	990807 3	6	6	6	6	6	6	6	6	6	6	6	6	10	10
71	WASHER W 0 10	990807 4	4	4	4	4	4	4	6	6	6	6	8	8	14	12
72	SCREW H 8X16/16	996200 3	6	6	6	6	6	6	6	6	6	6	6	6	6	6
73	SIDE SPACER	186051	8	8	8	8	8	8	-	-	-	-	-	-	-	-

74	LOCK NUT BASEPLATE M12	990051 0	10	10	10	10	10	10	10	12	12	12	12	12	12	11
75	SCREW OVAL HEAD CCØ10x25 CL.8.8	996070 3	19	20	19	20	19	20	21	22	21	22	18	18	28	26
76	LOCK NUT BASEPLATE M10	990050 4	25	28	25	28	25	28	25	28	25	28	22	22	30	30
77	PLUG Ø 20 BLANC	082474	2	2	2	2	2	2	2	2	2	2	2	2	2	2
78	CONVEYOR LAT.120L	186135	-	1	-	-	-	-	-	-	-	-	-	-	-	-
78	CONVEYOR LAT.180L	186140	-	-	-	-	-	1	-	-	-	1	-	-	-	-
78	CONVEYOR LATERAL 150L	186117	-	-	-	1	-	-	-	1	-	-	-	-	-	-
79	TRANSMISSION CARDAN	082710	1	1	1	1	1	1	1	1	1	1	1	1	1	1
80	SCREW OVAL HEAD CCØ10x20 CL.8.8	996070 5	-	2	-	2	-	2	-	2	-	2	-	-	-	-
81	WHEEL ARMS TAM	086096	4	4	4	4	4	4	-	-	-	-	-	-	-	-
82	FLOATING ARMS TAM	186409	2	2	2	2	2	2	-	-	-	-	-	-	-	-

	Designation	Ref. Nbref ->	TAM120EA	TAM120EL	TAM150EA	TAM150EL	TAM180EA	TAM180EL	PRO150EA	PRO150EL	PRO180EA	PRO180EL	PRO140M	PRO170M	PRO230M	PRO230EA
83	LOCK NUT H M20	9900550	2	2	2	2	2	2	2	2	2	2	2	2	2	2
84	SCREW H 12X60/30	9961977	2	2	2	2	2	2	2	2	2	2	2	2	-	-
85	SCREW H 20X55/55 CLASSE 8.8	9962057	2	2	2	2	2	2	2	2	2	2	2	2	2	2
86	WASHER MN 0 20	9908020	4	4	4	4	4	4	-	-	-	-	-	-	-	-
87	LINK	185019	2	2	2	2	2	2	2	2	2	2	2	2	-	-
88	BEARING 6204-2RS	082785	-	-	-	-	-	-	-	-	-	-	-	-	4	4
89	BELT B61	082780	-	-	-	-	-	-	-	-	-	-	-	-	2	2
90	IDLER	186266	-	-	-	-	-	-	-	-	-	-	-	-	2	2
91	SCREW H-M6 X 12	9960603	-	-	-	-	-	-	-	-	-	-	-	-	2	2
92	PLATE TIGHTENING	186311	-	-	-	-	-	-	-	-	-	-	-	-	2	2
93	SCREW H 12 x 130	186495	-	-	-	-	-	-	-	-	-	-	-	-	1	1
94	RIGHT ARM	582592	-	-	-	-	-	-	-	-	-	-	-	-	1	1
95	LEFT ARM	582593	-	-	-	-	-	-	-	-	-	-	-	-	1	1
96	NUT - M12	9900249	-	-	-	-	-	-	-	-	-	-	-	-	1	1
97	PIN V 3.2/36	9907013	-	-	-	-	-	-	-	-	-	-	-	-	1	1
98	SCREW H - M8 x 25	9962002	-	-	-	-	-	-	-	-	-	-	-	-	4	4
99	CIRCLIPS Ø20 x 1.2	9970114	-	-	-	-	-	-	-	-	-	-	-	-	2	2
102	AXLE Ø22 LG. 78	144100	-	-	-	-	-	-	-	-	-	-	-	-	2	2
104	PIN Ø8 + LIEN	082601	-	-	-	-	-	-	-	-	-	-	-	-	2	2
105	SCREW H - M12 x 40/30 Cl. 8.8	9962083	-	-	-	-	-	-	-	-	-	-	-	-	2	2
118	PUSHROD CLEVIS TAM 230	582579	-	-	-	-	-	-	-	-	-	-	-	-	2	2
120	NUT H M10	9900210	-	-	-	-	-	-	2	2	2	2	2	2	8	6
126	MULCHING BLADE 150 - L=350	082728	-	-	-	-	-	-	-	-	-	-	3	-	5	-
126	MULCHING BLADE 180 - L=420	082740	-	-	-	-	-	-	-	-	-	-	-	3	-	-
127	SELF-LOCKING NUT M18x1.5	9900549	-	-	-	-	-	-	-	-	-	-	3	3	5	-
129	CONE MULCH	582585	-	-	-	-	-	-	-	-	-	-	3	3	5	-
130	CHOCK 2MM Ø30,5	186412	-	-	-	-	-	-	4	4	4	4	4	4	4	4
131	CHOCK 6MM Ø30,5	186413	-	-	-	-	-	-	4	4	4	4	4	4	4	4
132	CHOCK 12MM Ø30,5	186414	-	-	-	-	-	-	4	4	4	4	4	4	4	4
133	CHOCK 25MM Ø30,5	186415	-	-	-	-	-	-	4	4	4	4	4	4	4	4
134	CHOCK 32MM Ø30,5	186416	-	-	-	-	-	-	4	4	4	4	4	4	4	4
136	SAFETY PIN Ø8 X 57	082774	-	-	-	-	-	-	4	4	4	4	4	4	4	4
137	WHEEL BRACKET VTAM PRO	582575	-	-	-	-	-	-	4	4	4	4	4	4	4	4
138	SCREW H 12X160/36	9961920	-	-	-	-	-	-	5	5	5	5	5	5	6	5
139	PNEUMATIC WHEEL	082773	-	-	-	-	-	-	4	4	4	4	4	4	4	4
140	SIDE SPACER PNEUM. WHEEL	186430	-	-	-	-	-	-	8	8	8	8	8	8	8	8
141	INTER. SPACER PNEUM. WHEEL	186410	-	-	-	-	-	-	4	4	4	4	4	4	4	4
144	SCREW H 12X50/30 - 8/8	9962087	-	-	-	-	-	-	2	2	2	2	2	2	-	-
146	LONG ARM	186386	-	-	-	-	-	-	2	2	2	2	2	2	-	-
147	BUSHING	186387	-	-	-	-	-	-	4	4	4	4	4	4	-	-
148	PLATE GUIDE RIGHT	186388	-	-	-	-	-	-	1	1	1	1	1	1	-	-
149	PLATE GUIDE LEFT	186389	-	-	-	-	-	-	1	1	1	1	1	1	-	-
152	LOCKNUT H M12	9900542	-	-	-	-	-	-	1	1	1	1	1	1	-	-

ATTELAGE FRONTAL





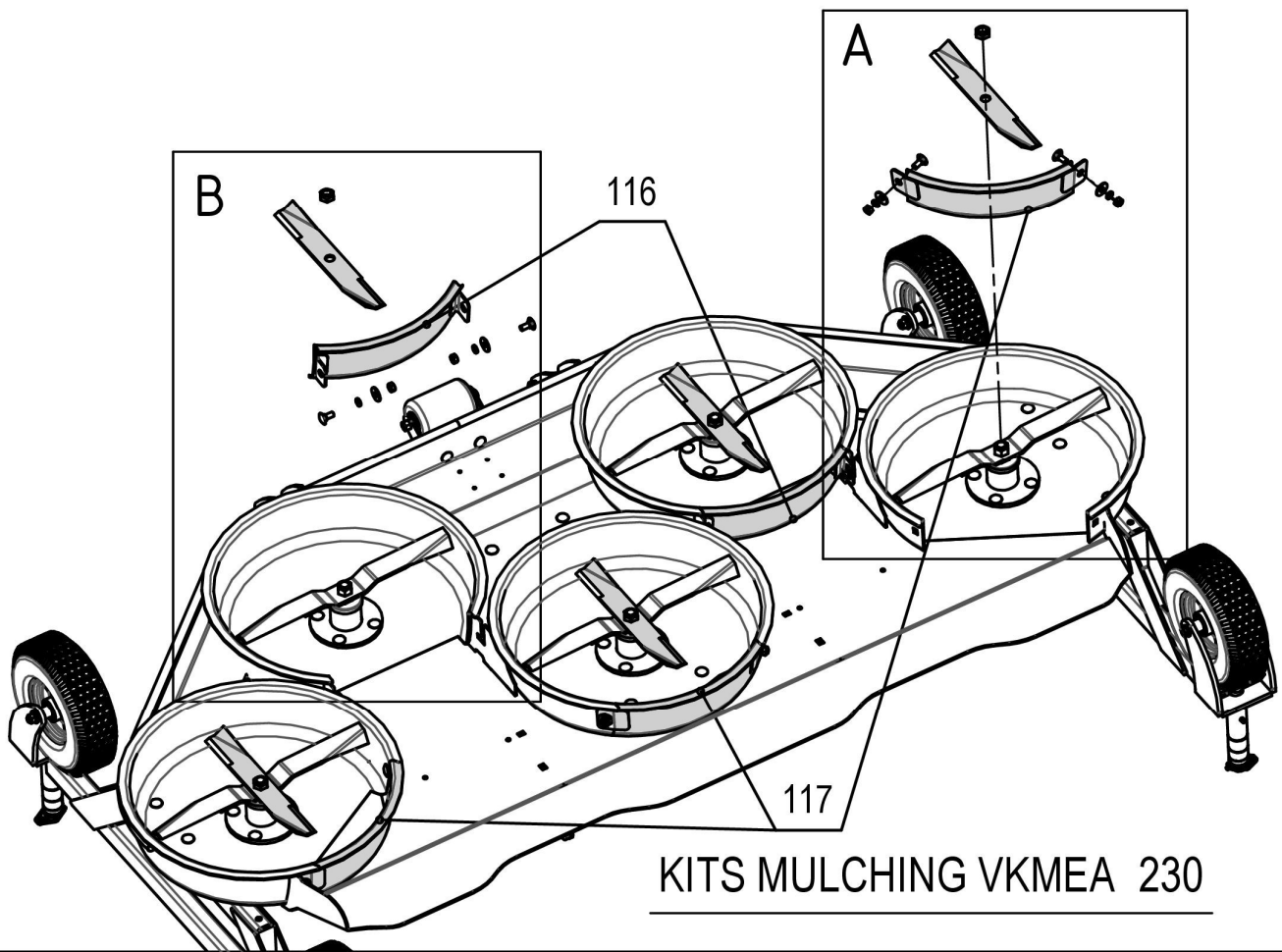
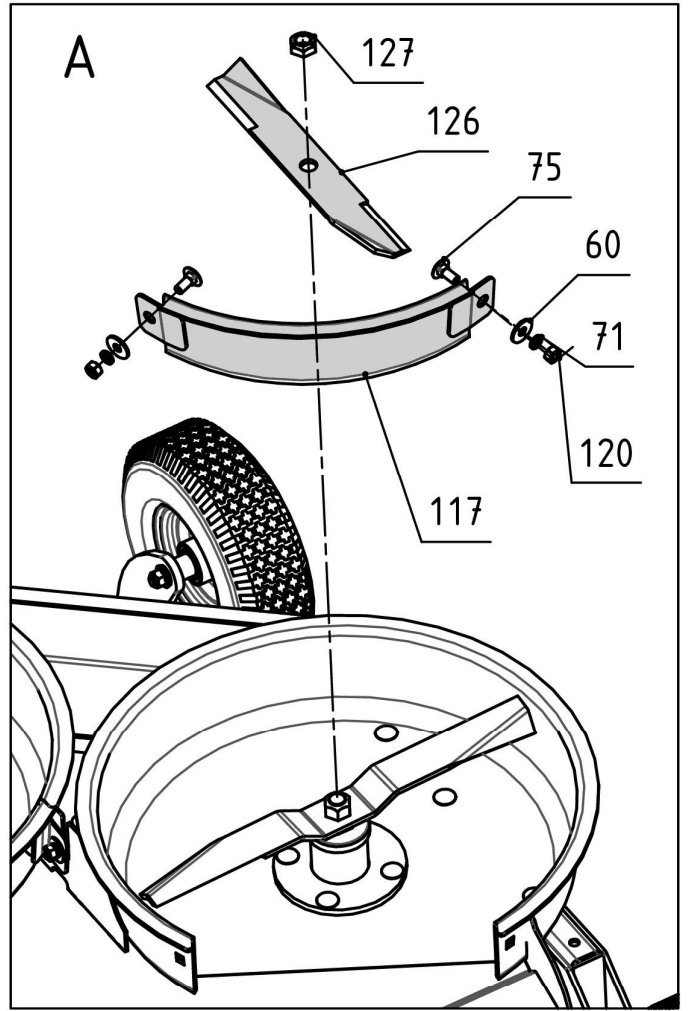
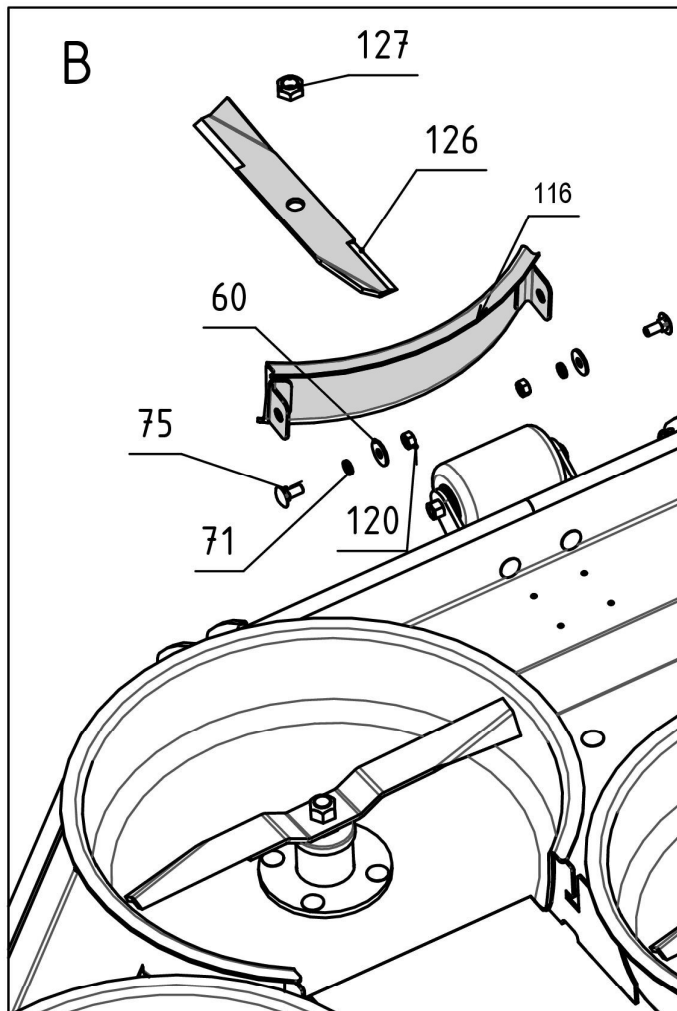
KITS MULCHING VKMEA120/150/180

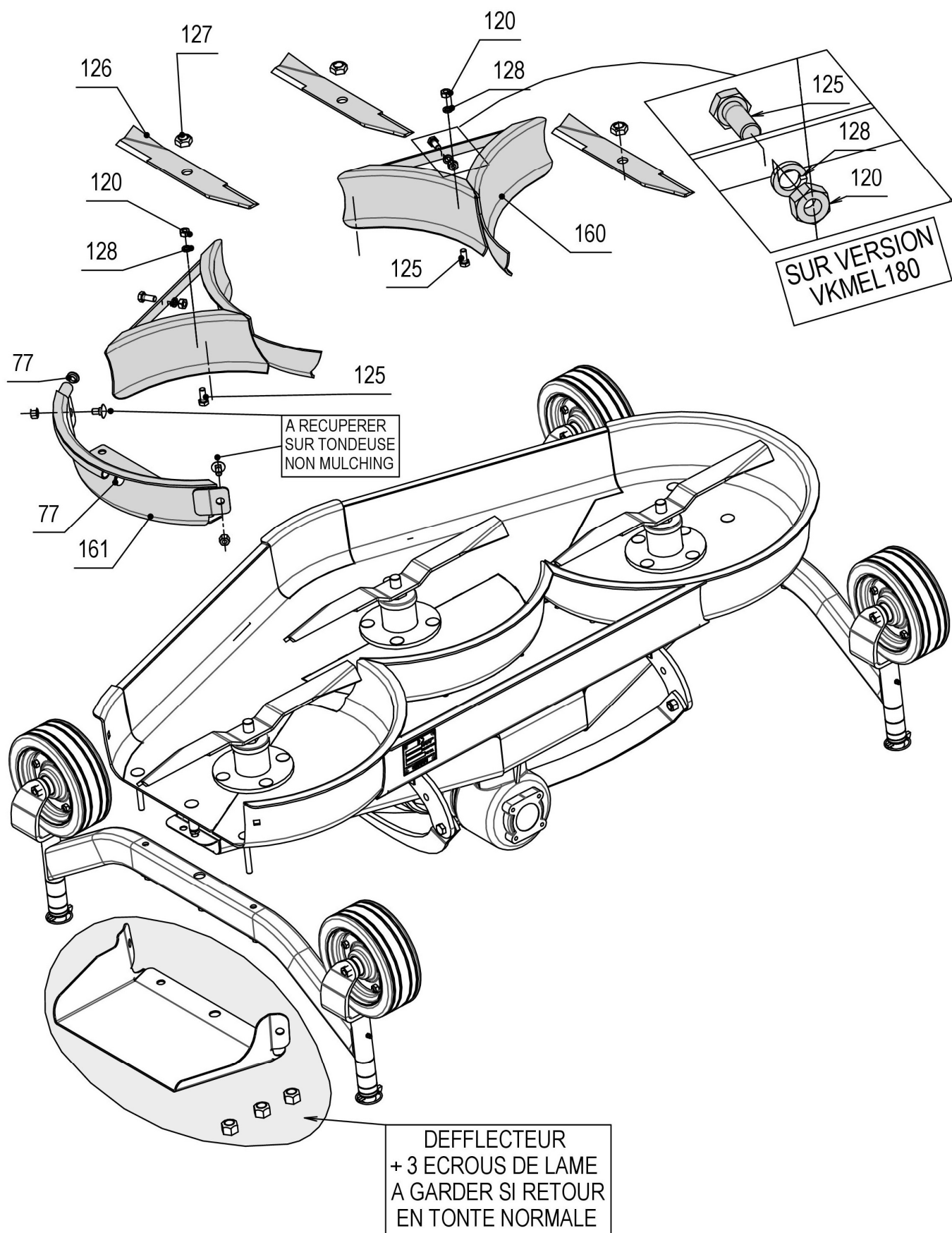
MAJAR

ROUTE DE MONTRÉAL BP.1017
11850 CARCASSONNE CEDEX 9

Tel. 04 68 25 38 16
Fax. 04 68 72 51 61

03/07/2014





KITS MULCHING TAM120/150/180 EL

VKMEL 120/150/180

MAJAR

ROUTE DE MONTRÉAL BP.1017
11850 CARCASSONNE CEDEX 9

Tel. 04 68 25 38 16
Fax. 04 68 72 51 61

06/12/2016

	Designation	Ref. Nbre ->	KM120A	KM120L	KM150A	KM150L	KM180A	KM180L	KM230A	KSCAL	FRONT LINKAGE
49	WASHER MN 0 12	9908012	-	-	-	-	-	-	-	2	-
60	WASHER LL Ø10.5x30 ép.2.5	9908006	-	-	-	-	-	-	10	2	-
62	WASHER MN 0 10	9908010	2	-	2	-	2	-	-	-	-
71	WASHER W 0 10	9908074	3	4	3	4	3	4	10	2	-
74	LOCKNUR BASEPLATE M12	9900510	-	-	-	-	-	-	-	-	4
75	SCREW OVAL HEAD CCØ10x25	9960703	1	4	1	4	1	4	10	2	-
100	ROD FRONT 120	582514	-	-	-	-	-	-	-	-	1
100	ROD FRONT 150	582509	-	-	-	-	-	-	-	-	1
100	ROD FRONT 180	582518	-	-	-	-	-	-	-	-	1
101	GEARBOX 1000TRS NORMAL ROT.	082734	-	-	-	-	-	-	-	-	1
101	GEARBOX 2000 TRS OPP ROT	082737	-	-	-	-	-	-	-	-	1
101	GEARBOX 2000TRS NORMAL ROT.	082736	-	-	-	-	-	-	-	-	1
101	GEARBOX 540TRS OPP. ROT.	082735	-	-	-	-	-	-	-	-	1
102	AXLE Ø22 LG. 78	144100	-	-	-	-	-	-	-	-	2
103	CLEVIS	587054	-	-	-	-	-	-	-	-	2
104	PIN Ø8 + LIEN	082601	-	-	-	-	-	-	-	-	2
105	SCREW H - M12 x 40/30 Cl. 8.8	9962083	-	-	-	-	-	-	-	-	2
107	NUT H - M16	9900218	-	-	-	-	-	-	-	-	4
108	SCREW H - M16 x 80/38	9961938	-	-	-	-	-	-	-	-	4
110	SCREW H - M12 x 45/30	9962081	-	-	-	-	-	-	-	-	2
111	COUNTER FLANGE	235029	-	-	-	-	-	-	-	-	2
112	WASHER W - 16	9908068	-	-	-	-	-	-	-	-	4
113	PLASTIC PLUG 40X40X3	082471	-	-	-	-	-	-	-	-	2
114	SUPPORT CARDAN FRONT	582531	-	-	-	-	-	-	-	-	1
116	CLOS.EJECT.INTERM. 230	582594	-	-	-	-	-	-	2	-	-
117	CLOS.EJECT.CENTRE/SIDE 230	582595	-	-	-	-	-	-	3	-	-
120	NUT H M10	9900210	3	4	3	4	3	4	10	2	-
121	CLOSURE MULCHING KM120A	582510	1	-	-	-	-	-	-	-	-
121	CLOSURE MULCHING KM150A	582502	-	-	1	-	-	-	-	-	-
121	CLOSURE MULCHING KM180A	582511	-	-	-	-	1	-	-	-	-
123	SCREW H 10X90/30	9961969	1	-	1	-	1	-	-	-	-
125	SCREW H 10X25/25	9962011	2	-	2	-	2	-	-	-	-
126	LAME MULCHING 120 - L=260	082739	3	3	-	-	-	-	-	-	-
126	LAME MULCHING 150 - L=350	082728	-	-	3	3	-	-	5	-	-
126	LAME MULCHING 180 - L=420	082740	-	-	-	-	3	3	-	-	-
127	SELF-LOCK NUT M18x1.5	9900549	3	3	3	3	3	3	5	-	-
138	SCREW H 12X160/36	9961920	-	-	-	-	-	-	-	1	-
152	NUT LOCKED H M12	9900542	-	-	-	-	-	-	-	1	-
153	ROLLER ANTI-SCALPING	186407	-	-	-	-	-	-	-	1	-
154	SPACER INT.ROLLER SCALP.	186408	-	-	-	-	-	-	-	1	-
155	SUPPORT ANTI-SCALPING	582576	-	-	-	-	-	-	-	1	-
156	BEARING 6004-2RS	082775	-	-	-	-	-	-	-	2	-

	Designation	Ref. Nbre ->	KM120A	KM120L	KM150A	KM150L	KM180A	KM180L	KM230A	KSCAL	FRONT LINKAGE
158	FLANGE KASCAL	186425	-	-	-	-	-	-	-	1	-
160	CLOSURE ALVEOLES KM120L	582512	-	2	-	-	-	-	-	-	-
160	CLOSURE ALVEOLES KM150L	582504	-	-	-	2	-	-	-	-	-
160	CLOSURE ALVEOLES KM180L	582513	-	-	-	-	-	2	-	-	-
161	CLOSURE EJECTION KM120L	582516	-	1	-	-	-	-	-	-	-
161	CLOSURE EJECTION KM150L	582503	-	-	-	1	-	-	-	-	-
161	CLOSURE EJECTION KM180L	582517	-	-	-	-	-	1	-	-	-



1 Route de Montréal
CS30074
11890 CARCASSONNE Cedex 9

Téléphone 04 68 25 38 16